

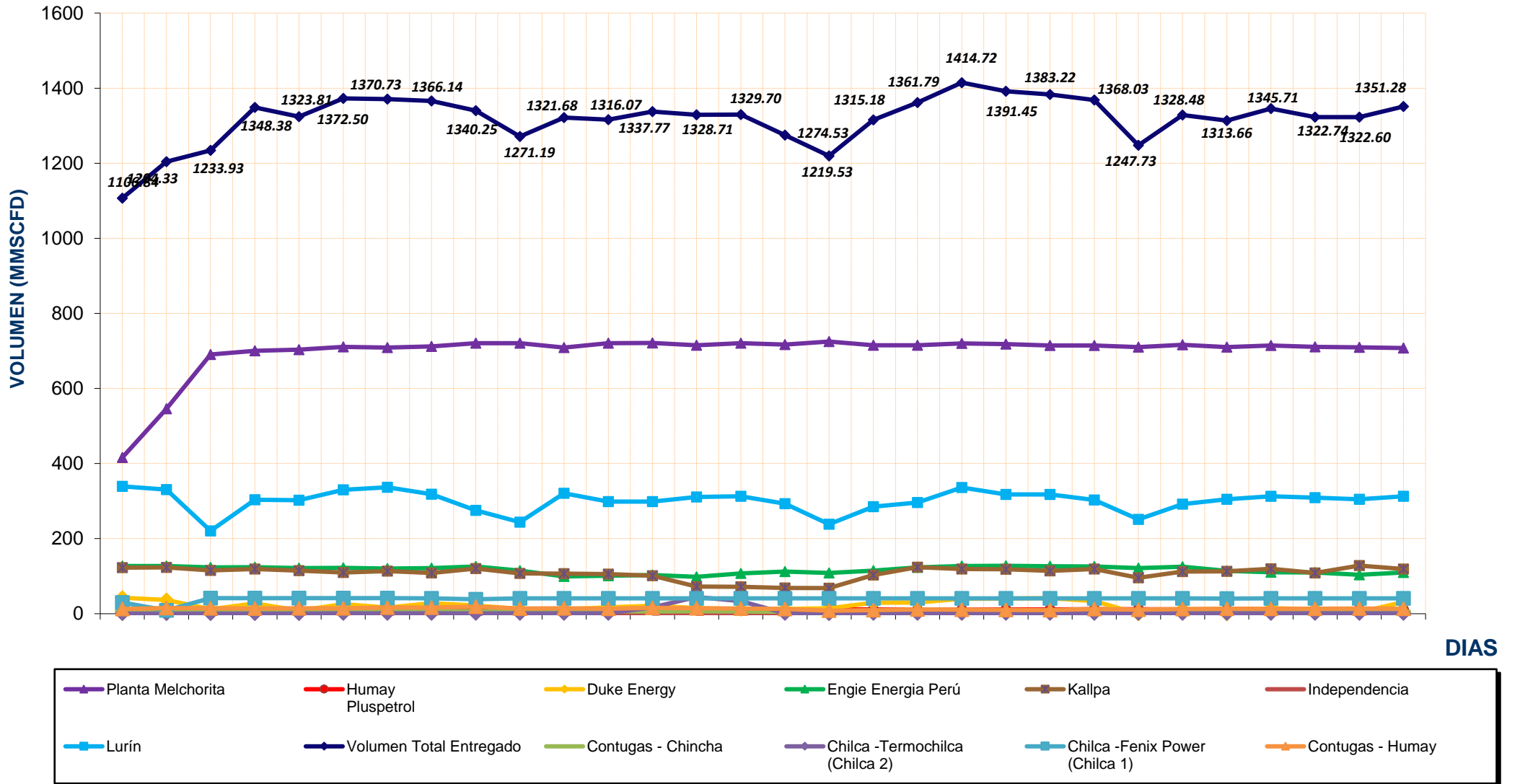
REPORTE DIARIO DE LA OPERACIÓN DE LOS SISTEMAS DE TRANSPORTE DE GAS NATURAL (GN) Y LÍQUIDOS DE GAS NATURAL (LGN)																	
CONCESIONARIO: TRANSPORTADORA DE GAS DEL PERU S.A.																	
PERIODO: NOVIEMBRE 2019																	
Entregas del Sistema de Transporte de Gas Natural (MMSCFD)															Sistema de Transporte de Líquidos de Gas Natural (BPD²)		
Días	Ducto Principal PLNG			Ducto TGP											Total Volumen Entregado	Días	Volumen Bombeado Malvinas
	Chiquintirca	C.U.A	Planta Melchorita	Humay	Duke Energy	Engie Energía Perú	Kallpa	Independencia	Chincha - Contugas	Humay - Contugas	Chilca - Termochilca	Chilca - Fenix Power	Lurin				
1-Nov-19	758.87	375.46	416.06	10.81	42.55	126.76	122.74	0.00	5.76	12.62	0.39	29.89	339.26	1106.84	1-Nov-19	59,098.00	
2-Nov-19	893.00	359.74	546.15	11.05	36.34	127.18	123.11	0.00	5.28	15.21	0.43	8.89	330.69	1204.33	2-Nov-19	77,059.00	
3-Nov-19	878.60	229.06	690.65	11.13	12.16	123.38	115.62	0.00	4.20	14.43	0.22	41.37	220.77	1233.93	3-Nov-19	82,216.00	
4-Nov-19	1018.32	304.24	700.45	11.56	27.64	123.91	119.25	0.69	5.37	14.11	0.39	41.40	303.61	1348.38	4-Nov-19	90,531.00	
5-Nov-19	995.56	307.58	703.24	11.20	8.15	121.24	115.05	0.72	5.60	14.36	0.62	41.36	302.25	1323.81	5-Nov-19	90,226.00	
6-Nov-19	989.48	308.43	710.62	11.25	25.45	122.14	109.84	0.74	5.49	14.65	0.69	41.32	330.29	1372.50	6-Nov-19	88,446.00	
7-Nov-19	1050.99	327.60	708.98	10.04	16.39	120.18	113.45	0.32	5.97	16.64	0.70	41.35	336.70	1370.73	7-Nov-19	89,322.00	
8-Nov-19	1026.83	322.58	711.93	11.67	28.08	121.31	108.87	0.85	7.03	16.32	0.80	41.16	318.13	1366.14	8-Nov-19	83,318.00	
9-Nov-19	992.14	288.66	720.66	11.39	22.10	125.52	120.52	0.16	6.71	18.73	0.74	38.43	275.29	1340.25	9-Nov-19	90,363.00	
10-Nov-19	980.57	245.03	720.60	11.15	12.41	114.84	107.56	0.00	5.28	13.81	0.65	40.67	244.21	1271.19	10-Nov-19	83,823.00	
11-Nov-19	995.04	291.94	708.64	11.23	12.27	99.20	106.96	0.13	6.47	14.38	0.72	40.84	320.83	1321.68	11-Nov-19	90,859.00	
12-Nov-19	1008.85	277.67	720.91	11.42	17.12	101.08	105.49	0.50	6.41	13.02	0.73	40.87	298.52	1316.07	12-Nov-19	88,882.00	
13-Nov-19	987.37	286.04	720.99	11.95	21.48	103.13	101.44	0.32	6.15	15.75	16.91	40.92	298.73	1337.77	13-Nov-19	90,991.00	
14-Nov-19	964.23	281.19	715.09	11.42	14.86	98.22	72.23	0.00	6.24	14.26	44.50	40.90	310.98	1328.71	14-Nov-19	90,323.00	
15-Nov-19	964.79	275.30	720.41	11.34	11.97	107.45	71.50	0.17	6.12	13.86	33.28	40.90	312.69	1329.70	15-Nov-19	90,212.00	
16-Nov-19	966.10	250.88	716.69	11.21	12.67	112.36	68.80	0.14	5.19	12.82	0.75	40.90	293.00	1274.53	16-Nov-19	87,323.00	
17-Nov-19	955.67	207.39	725.00	11.17	14.35	108.47	68.30	0.00	4.11	8.10	0.63	40.92	238.48	1219.53	17-Nov-19	85,149.00	
18-Nov-19	965.96	269.83	714.83	11.13	29.31	114.80	102.86	0.00	6.05	9.50	0.77	40.89	285.05	1315.18	18-Nov-19	87,917.00	
19-Nov-19	1034.22	304.00	715.34	10.86	29.61	123.37	124.20	0.09	8.67	11.48	0.73	41.01	296.44	1361.79	19-Nov-19	83,858.00	
20-Nov-19	1128.73	361.76	720.02	11.07	39.78	126.89	119.16	0.14	8.65	10.64	0.90	41.02	336.44	1414.72	20-Nov-19	98,602.00	
21-Nov-19	1070.08	344.16	718.35	11.24	40.02	127.63	118.18	0.00	6.31	9.92	0.91	41.02	317.87	1391.45	21-Nov-19	90,629.00	
22-Nov-19	1039.50	334.16	714.19	11.52	41.63	126.19	114.07	0.14	5.77	9.80	0.91	41.02	317.97	1383.22	22-Nov-19	80,512.00	
23-Nov-19	1002.85	316.29	714.43	11.76	33.40	125.90	119.11	0.00	5.93	12.94	0.82	40.75	302.97	1368.03	23-Nov-19	97,234.00	
24-Nov-19	975.10	247.64	710.38	11.82	0.00	121.56	95.59	0.00	4.58	10.86	0.80	40.79	251.35	1247.73	24-Nov-19	89,162.00	
25-Nov-19	986.65	278.42	716.04	11.19	11.95	125.00	112.21	0.33	5.81	12.56	0.96	40.77	291.65	1328.48	25-Nov-19	88,380.00	
26-Nov-19	983.73	282.83	710.06	11.10	0.00	113.90	112.78	0.38	5.78	13.30	1.01	40.62	304.74	1313.66	26-Nov-19	88,683.00	
27-Nov-19	1034.72	304.34	714.25	11.34	15.11	110.62	119.48	1.15	5.68	13.43	1.04	40.68	312.92	1345.71	27-Nov-19	89,939.00	
28-Nov-19	1004.31	294.21	710.88	11.16	11.64	110.09	108.59	0.52	5.78	13.37	1.03	40.74	308.93	1322.74	28-Nov-19	89,435.00	
29-Nov-19	1088.39	296.81	709.63	11.00	3.78	103.72	128.17	0.31	5.58	13.69	1.04	40.74	304.94	1322.60	29-Nov-19	88,714.00	
30-Nov-19	973.26	312.37	707.44	10.98	30.81	110.04	118.92	0.00	5.00	13.41	0.93	40.74	313.01	1351.28	30-Nov-19	87,362.00	
TOTAL	29,713.91	8,885.60	20,932.94	337.19	623.05	3,496.10	3,244.06	7.81	176.98	397.96	114.99	1,182.89	9,018.72	39,532.69	TOTAL	2,618,568.00	
PROMEDIO	990.46	296.19	697.76	11.24	20.77	116.54	108.14	0.26	5.90	13.27	3.83	39.43	300.62	1,317.76	PROMEDIO	87,285.60	

(*) Los datos de volúmenes de Gas Natural y Líquidos de Gas Natural son operativos y no necesariamente coinciden con datos fiscalizados.

¹ MMSCFD: Millones de Pies Cúbicos Estandar por Día

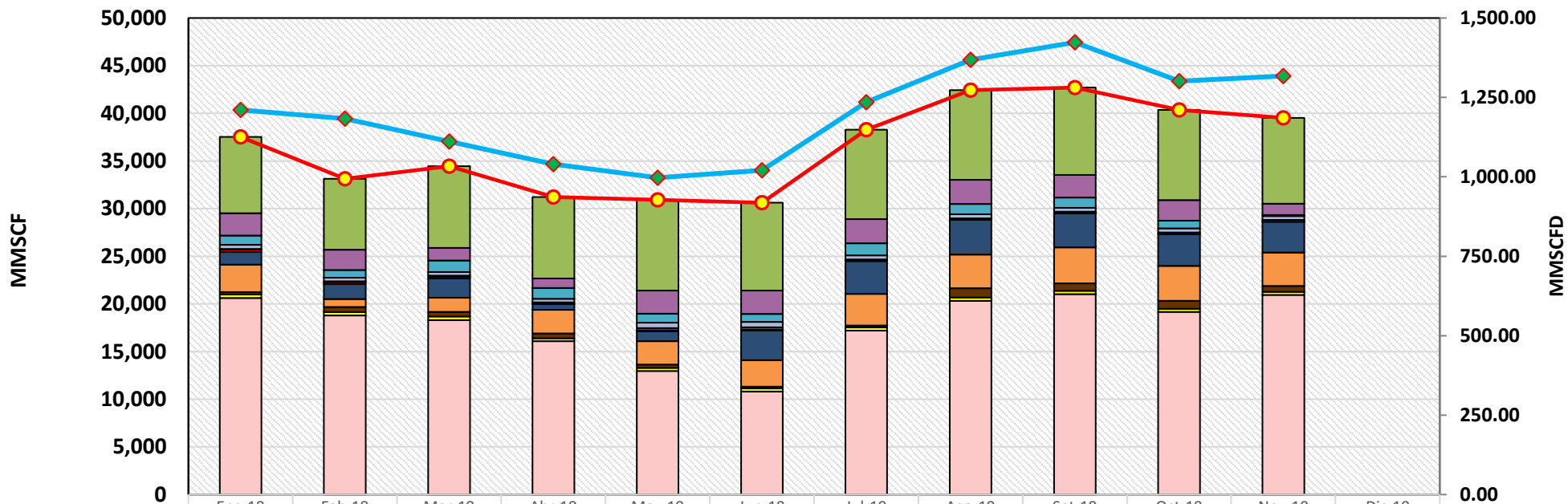
² BPD: Barriles Por Día

REPORTE OPERATIVO* DEL SISTEMA DE TRANSPORTE DE GAS NATURAL (GN) DURANTE NOVIEMBRE 2019



* Los valores podría diferir del Volumen Fiscalizado.

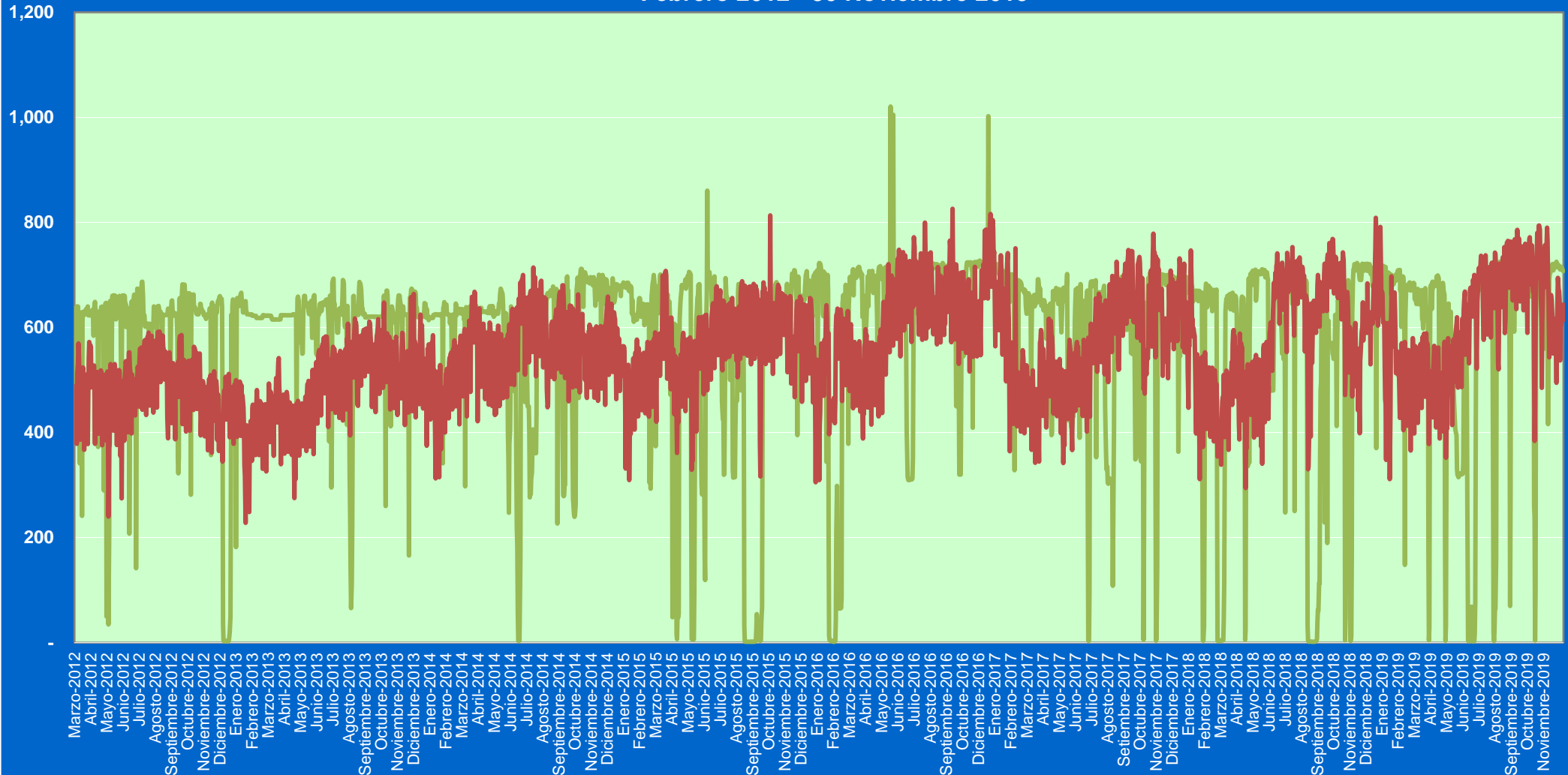
REPORTE MENSUAL DE VOLUMENES ENTREGADOS EN EL SISTEMA DE TRANSPORTE DE GAS NATURAL (GN) DURANTE EL 2019



	Ene-19	Feb-19	Mar-19	Abr-19	May-19	Jun-19	Jul-19	Ago-19	Set-19	Oct-19	Nov-19	Dic-19
Lurín	8,025.7	7,438.7	8,572.2	8,533.4	9,499.6	9,209.0	9,381.4	9,413.4	9,158.1	9,446.3	9,018.7	
Chilca - Fenix Power	2,330.7	2,147.5	1,327.9	996.4	2,449.6	2,451.4	2,530.5	2,521.7	2,369.4	2,169.4	1,182.9	
Chilca - Termochilca	967.6	789.9	1,199.9	1,145.2	934.0	832.4	1,281.3	1,080.8	1,088.8	806.1	115.0	
Contugas - Humay	437.7	392.1	383.9	363.4	556.7	586.1	418.8	417.7	398.8	430.7	398.0	
Contugas - Chincha	79.5	70.0	89.4	160.4	241.3	229.8	159.5	168.3	167.9	178.0	177.0	
Independencia	235.7	218.8	187.8	40.6	90.7	94.0	0.9	3.1	0.4	8.7	7.8	
Kallpa	1,322.2	1,576.4	2,040.5	593.9	1,047.5	3,103.4	3,450.4	3,638.2	3,595.7	3,311.9	3,244.1	
Engie Energia Perú	2,902.3	821.1	1,497.2	2,484.4	2,463.1	2,799.6	3,337.6	3,532.5	3,752.9	3,657.1	3,496.1	
Duke Energy	243.5	541.3	479.2	504.0	332.5	159.2	175.1	984.8	799.2	855.4	623.1	
Humay	373.0	341.2	361.4	292.5	342.1	344.3	350.8	350.1	345.1	326.3	337.2	
Planta Melchorita	20,619.1	18,798.5	18,312.7	16,097.7	12,958.4	10,804.9	17,202.7	20,314.7	21,023.7	19,153.0	20,932.9	
Total Transportado GN	37,536.9	33,135.4	34,452.3	31,211.9	30,915.4	30,614.2	38,289.0	42,425.2	42,700.0	40,342.9	39,532.7	
Promedio Total Transportado (MMSCFD)	1,210.87	1,183.41	1,111.36	1,040.40	997.27	1,020.47	1,235.13	1,368.56	1,423.33	1,301.38	1,317.76	

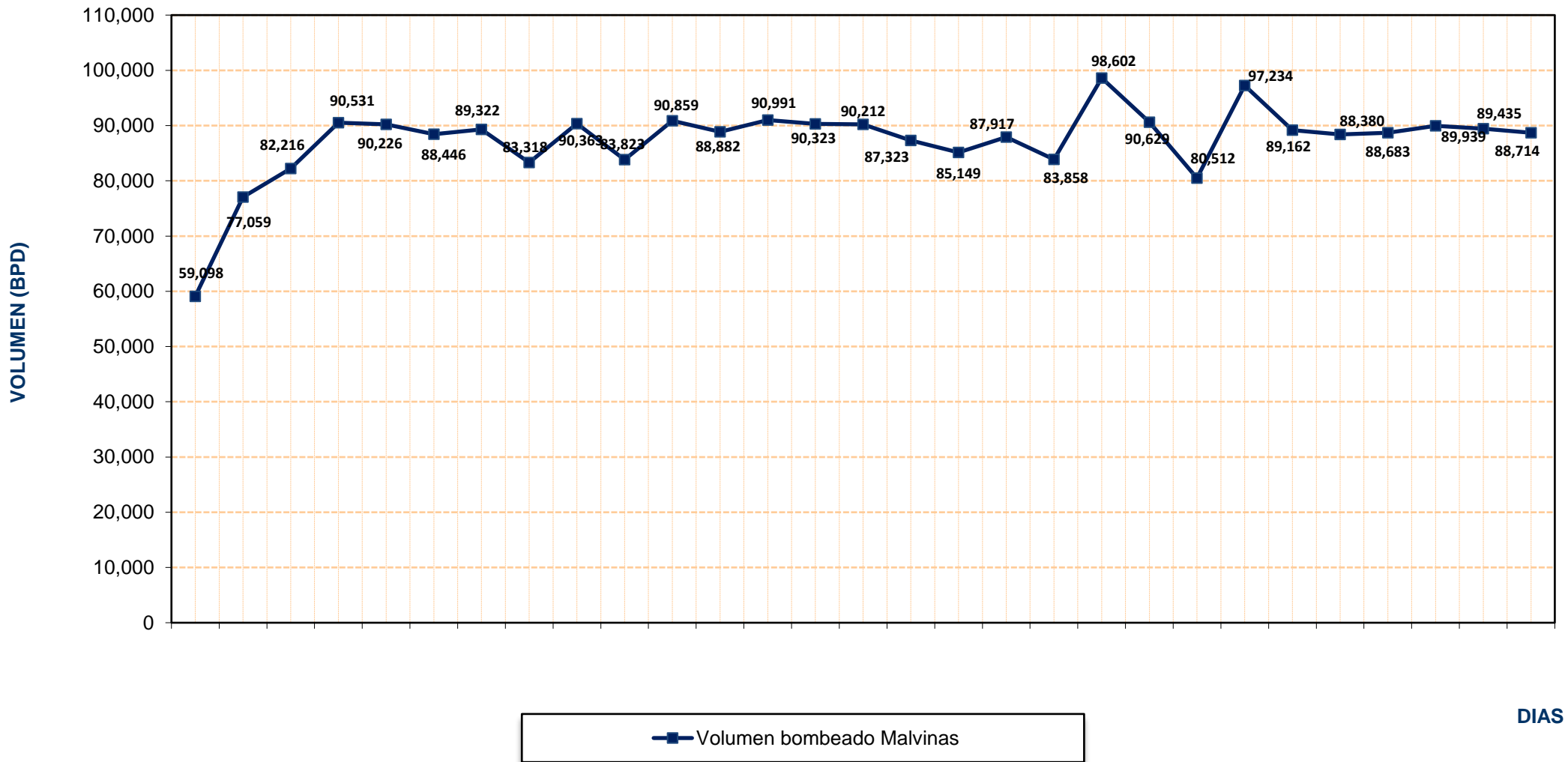
Volumen
(MMSCFD)

Volumen de Gas Natural entregado diariamente por TGP en millones de pies cúbicos diarios (MMSCFD) Febrero 2012 - 30 Noviembre 2019



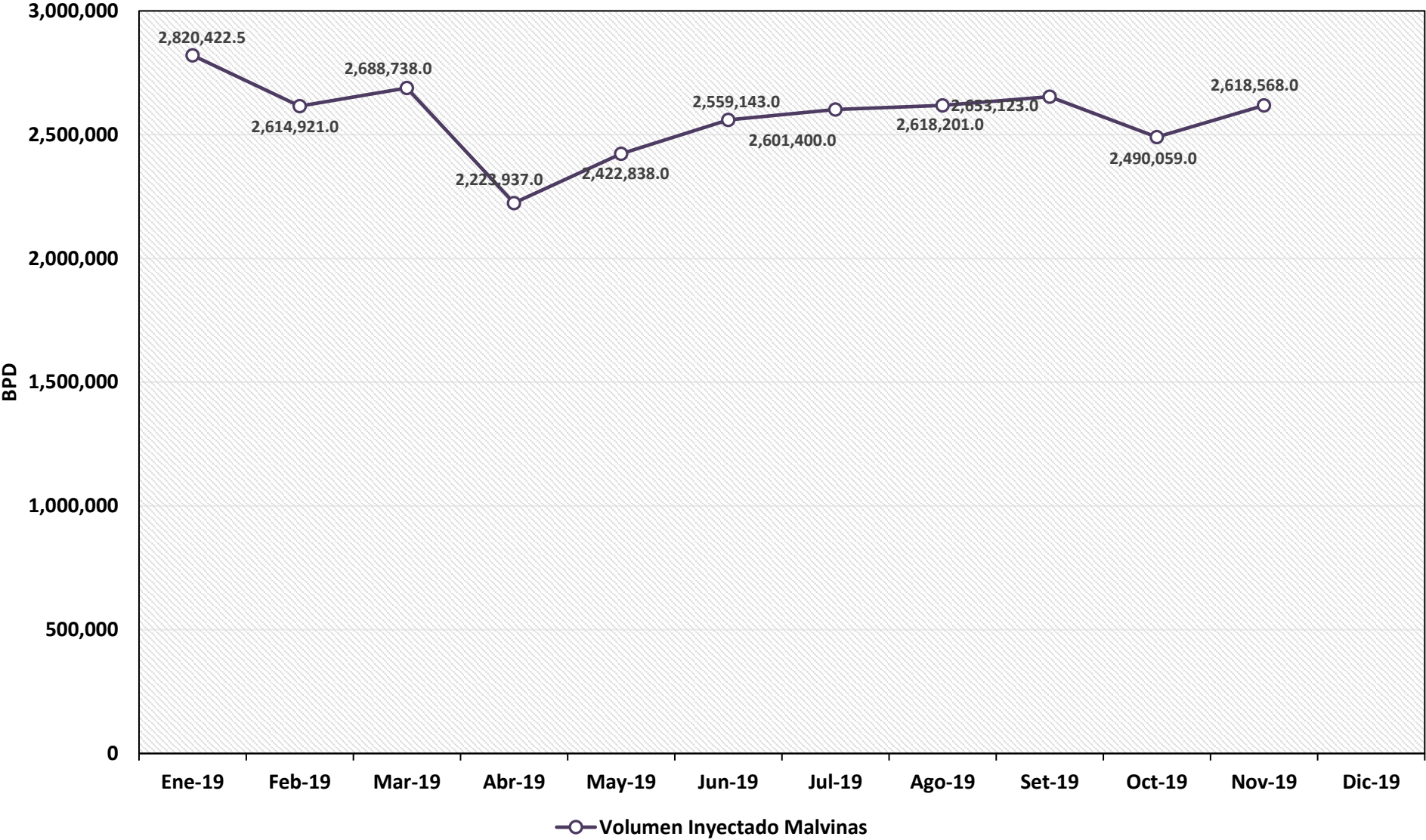
— Planta Melchorita — B.O.O.T

REPORTE OPERATIVO* DEL SISTEMA DE TRANSPORTE DE LÍQUIDOS DE GAS NATURAL (LGN) DURANTE NOVIEMBRE 2019



* Los valores podría diferir del Volumen Fiscalizado.

REPORTE MENSUAL DE VOLUMENES ENTREGADOS EN EL SISTEMA DE TRANSPORTE DE LIQUIDOS DE GAS NATURAL (LGN) DURANTE EL 2019



**VOLUMEN PROMEDIO DIARIO DE LÍQUIDOS DE GAS NATURAL TRANSPORTADO POR TGP EN
BARRILES POR DÍA (BPD)
Septiembre 2012 - Noviembre 2019**

