

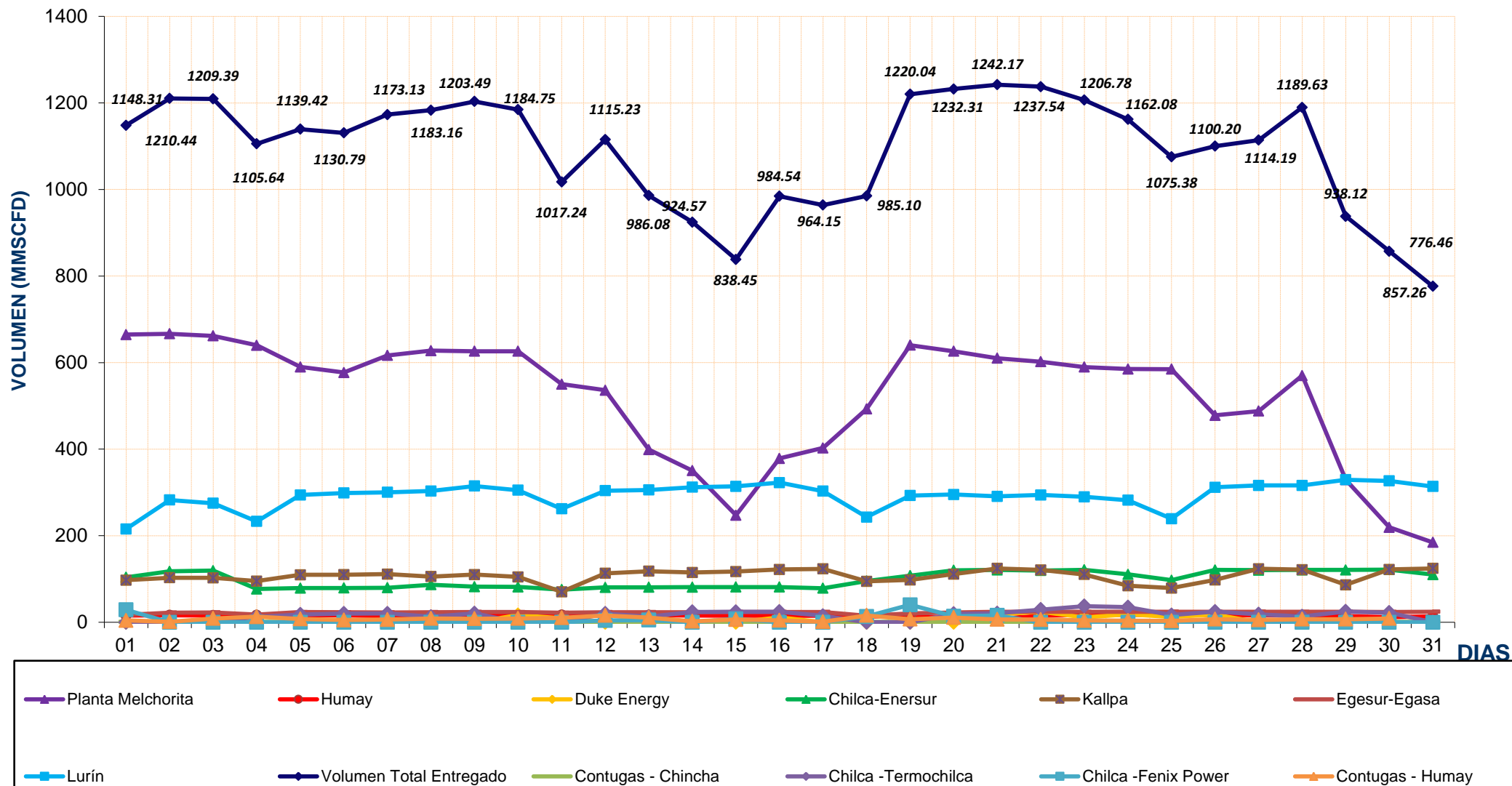
REPORTE DIARIO DE LA OPERACIÓN* DE LOS SISTEMAS DE TRANSPORTE DE GAS NATURAL (GN) Y LÍQUIDOS DE GAS NATURAL (LGN)																
CONCESIONARIO: TRANSPORTADORA DE GAS DEL PERU S.A.																
PERIODO: Mayo 2014																
Entregas del Sistema de Transporte de Gas Natural (MMSCFD <sup>1</sup> )															Sistema de Transporte de Líquidos de Gas Natural (BPD <sup>2</sup> )	
Días	Ducto Principal PLNG			Ducto TGP										Total Volumen Entregado	Días	Volumen Bombeado Malvinas
	Chiquintirca	C.U.A	Planta Melchorita	Humay	Duke Energy	Enersur	Kallpa	Egasa / Egesur	Chincha - Contugas	Humay - Contugas	Chilca - Termochilca	Chilca - Fenix Power	Lurín			
01-may-14	886.13	213.27	664.63	15.83	0.01	103.97	97.36	17.08	0.91	4.24	0.00	28.78	215.51	1148.31	01-may-14	107,512.00
02-may-14	927.78	246.36	666.68	15.96	0.00	117.61	103.02	22.27	1.04	1.35	0.00	0.00	282.51	1210.44	02-may-14	106,603.00
03-may-14	925.79	254.38	661.83	15.53	0.00	119.40	102.54	22.78	1.24	8.76	2.37	0.00	274.93	1209.39	03-may-14	110,210.50
04-may-14	901.94	201.26	640.00	16.01	0.00	76.89	95.24	17.84	1.25	12.82	12.43	0.00	233.15	1105.64	04-may-14	108,109.50
05-may-14	881.92	256.70	589.95	16.16	0.00	78.93	109.63	23.65	1.21	7.73	18.06	0.00	294.09	1139.42	05-may-14	107,444.00
06-may-14	834.65	243.71	577.10	16.14	0.00	79.26	109.79	23.04	1.31	5.30	20.12	0.00	298.73	1130.79	06-may-14	107,090.50
07-may-14	821.69	235.27	616.68	14.14	0.00	79.76	111.35	22.64	1.32	6.36	20.48	0.00	300.40	1173.13	07-may-14	104,201.00
08-may-14	866.19	250.96	627.76	13.57	0.00	86.89	105.54	23.19	1.31	8.76	12.79	0.00	303.35	1183.16	08-may-14	106,562.50
09-may-14	881.02	268.97	626.27	15.98	0.00	82.26	110.22	23.72	1.24	8.26	20.64	0.00	314.90	1203.49	09-may-14	107,200.00
10-may-14	873.56	263.34	626.37	16.55	16.52	81.80	104.70	23.62	1.15	8.76	0.00	0.00	305.29	1184.75	10-may-14	107,635.00
11-may-14	780.38	283.66	550.20	16.70	9.08	75.58	70.27	22.09	0.84	10.40	0.00	0.00	262.09	1017.24	11-may-14	96,702.00
12-may-14	871.59	232.64	536.30	16.18	0.00	80.65	113.13	23.22	1.32	15.83	20.07	4.34	304.18	1115.23	12-may-14	105,969.00
13-may-14	723.36	230.03	399.16	16.01	12.84	80.97	118.09	23.36	1.30	10.95	12.71	5.03	305.65	986.08	13-may-14	98,514.00
14-may-14	576.05	209.53	350.39	15.42	0.00	81.03	114.92	23.39	1.20	2.30	23.82	0.00	312.11	924.57	14-may-14	92,097.00
15-may-14	479.14	222.94	247.25	15.21	0.00	81.50	117.28	23.76	1.32	6.28	23.99	7.96	313.92	838.45	15-may-14	85,527.00
16-may-14	580.32	234.91	378.61	14.87	11.10	81.52	121.89	23.74	1.36	4.59	24.32	0.00	322.55	984.54	16-may-14	90,709.00
17-may-14	598.96	211.49	402.88	14.92	0.00	78.77	123.35	23.75	1.37	1.20	14.89	0.00	303.01	964.15	17-may-14	83,933.00
18-may-14	622.60	193.52	492.94	13.59	0.00	95.32	94.47	15.22	1.31	15.81	0.00	13.39	243.05	985.10	18-may-14	86,144.00
19-may-14	878.45	279.64	640.29	12.67	0.00	107.65	97.71	20.24	1.29	7.06	0.00	40.24	292.88	1220.04	19-may-14	100,965.00
20-may-14	897.24	295.51	626.28	10.67	0.00	120.21	111.33	22.76	1.39	10.95	19.57	14.03	295.13	1232.31	20-may-14	99,173.00
21-may-14	911.21	324.26	610.08	8.21	18.20	121.00	124.55	24.47	1.34	6.71	20.91	15.66	291.05	1242.17	21-may-14	96,367.00
22-may-14	1027.36	327.04	602.04	15.19	24.30	119.59	121.04	24.35	1.35	6.36	29.28	0.00	294.04	1237.54	22-may-14	108,156.00
23-may-14	926.86	324.86	589.78	17.04	11.24	121.23	110.43	24.22	1.36	4.24	37.43	0.00	289.81	1206.78	23-may-14	115,865.00
24-may-14	900.24	300.74	585.14	17.16	18.28	110.60	84.47	24.25	1.35	3.88	34.91	0.00	282.04	1162.08	24-may-14	116,056.00
25-may-14	885.25	232.56	584.97	16.80	12.67	97.20	78.89	24.31	1.12	3.53	16.48	0.00	239.40	1075.38	25-may-14	105,568.50
26-may-14	878.47	329.88	478.19	16.51	17.59	120.98	97.80	24.30	1.21	7.06	24.78	0.00	311.78	1100.20	26-may-14	106,060.00
27-may-14	758.94	262.66	488.14	15.97	0.00	120.46	123.75	24.33	1.22	5.65	18.40	0.00	316.27	1114.19	27-may-14	100,158.00
28-may-14	847.16	284.69	570.08	15.55	0.00	120.86	121.57	24.06	0.66	7.07	13.67	0.00	316.12	1189.63	28-may-14	103,144.00
29-may-14	694.22	310.53	329.49	14.28	0.00	120.97	86.54	24.30	1.18	7.06	24.80	0.00	329.49	938.12	29-may-14	91,163.00
30-may-14	516.82	299.53	219.50	11.72	0.00	121.65	121.91	23.73	1.30	8.72	22.12	0.00	326.60	857.26	30-may-14	80,433.50
31-may-14	430.51	248.57	184.58	13.44	0.00	110.16	124.31	24.38	1.29	4.63	0.00	0.00	313.67	776.46	31-may-14	75,270.00
<b>TOTAL</b>	<b>24,585.82</b>	<b>8,073.42</b>	<b>16,163.57</b>	<b>463.97</b>	<b>151.82</b>	<b>3,074.68</b>	<b>3,327.10</b>	<b>708.09</b>	<b>38.04</b>	<b>222.61</b>	<b>489.04</b>	<b>129.43</b>	<b>9,087.73</b>	<b>33,856.07</b>	<b>TOTAL</b>	<b>3,110,541.99</b>
<b>PROMEDIO</b>	<b>793.09</b>	<b>260.43</b>	<b>521.41</b>	<b>14.97</b>	<b>4.90</b>	<b>99.18</b>	<b>107.33</b>	<b>22.84</b>	<b>1.23</b>	<b>7.18</b>	<b>15.78</b>	<b>4.18</b>	<b>293.15</b>	<b>1,092.13</b>	<b>PROMEDIO</b>	<b>100,340.06</b>

(\*) Los datos de volúmenes de Gas Natural y Líquidos de Gas Natural son operativos y no necesariamente coinciden con datos fiscalizados.

<sup>1</sup> MMSCFD: Millones de Pies Cúbicos Estandar por Día

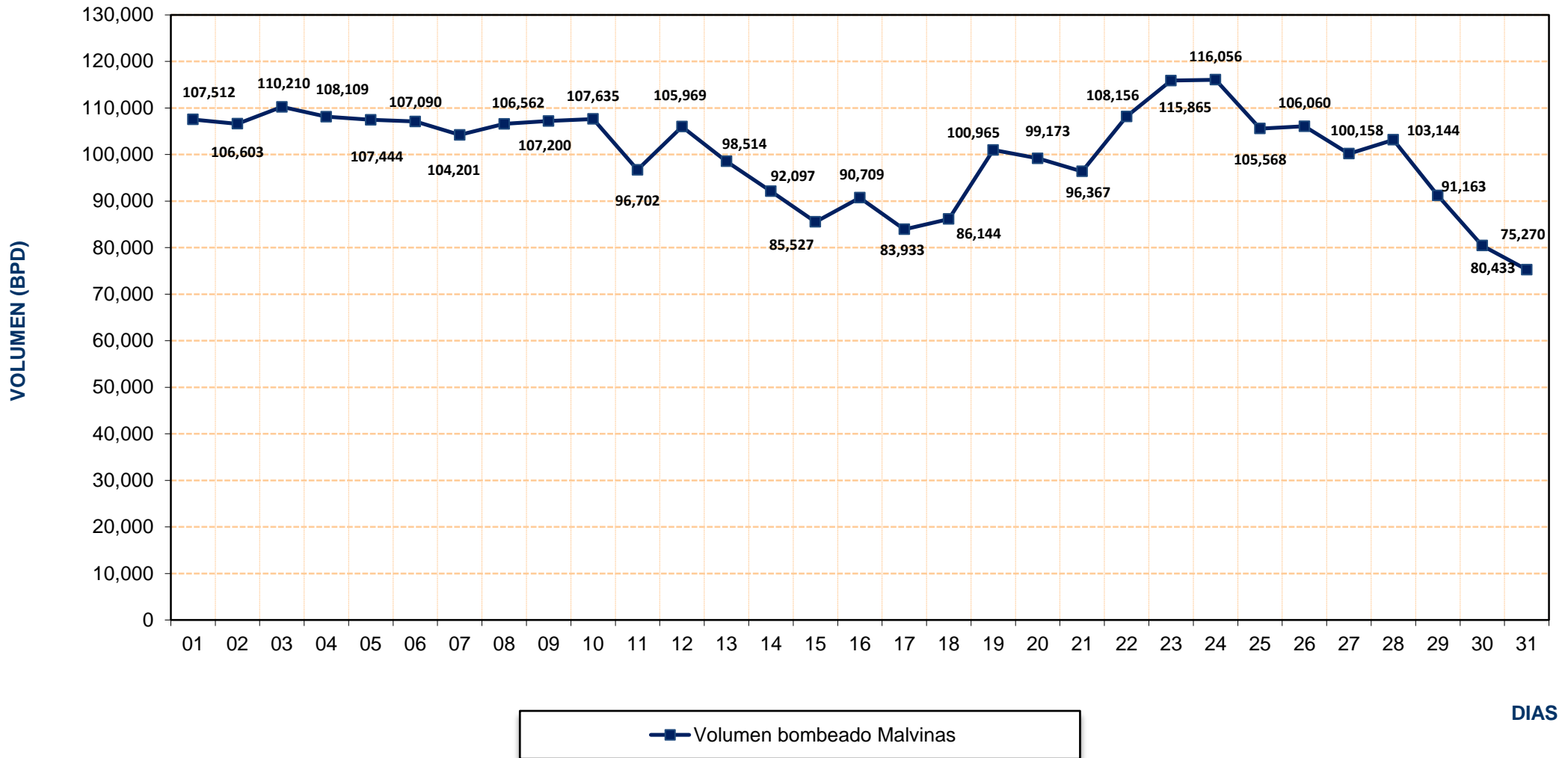
<sup>2</sup> BPD: Barriles Por Día

## REPORTE OPERATIVO\* DEL SISTEMA DE TRANSPORTE DE GAS NATURAL (GN) DURANTE MAYO 2014



\* Los valores podría diferir del Volumen Fiscalizado.

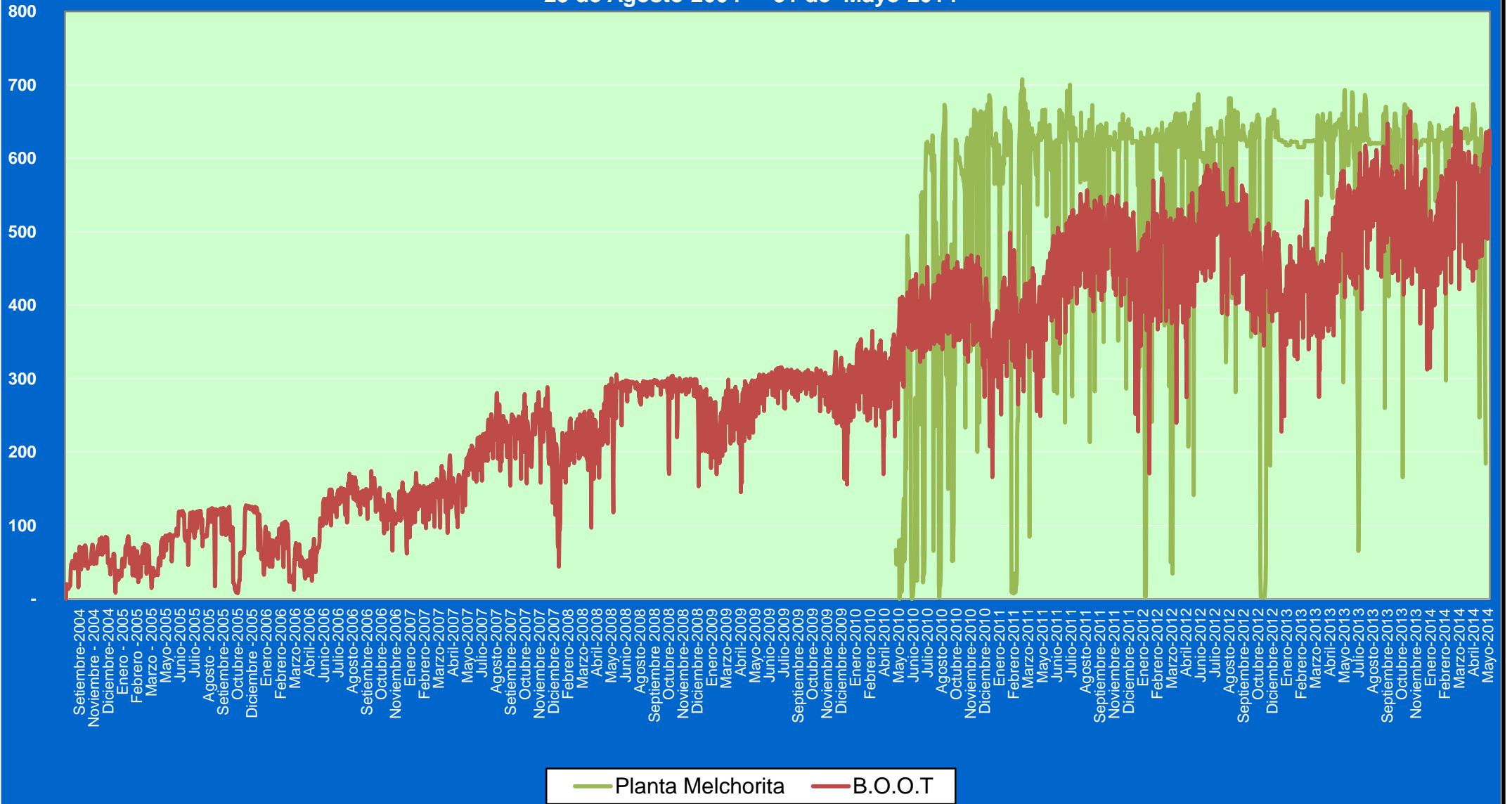
## REPORTE OPERATIVO\* DEL SISTEMA DE TRANSPORTE DE LÍQUIDOS DE GAS NATURAL (LGN) DURANTE MAYO 2014



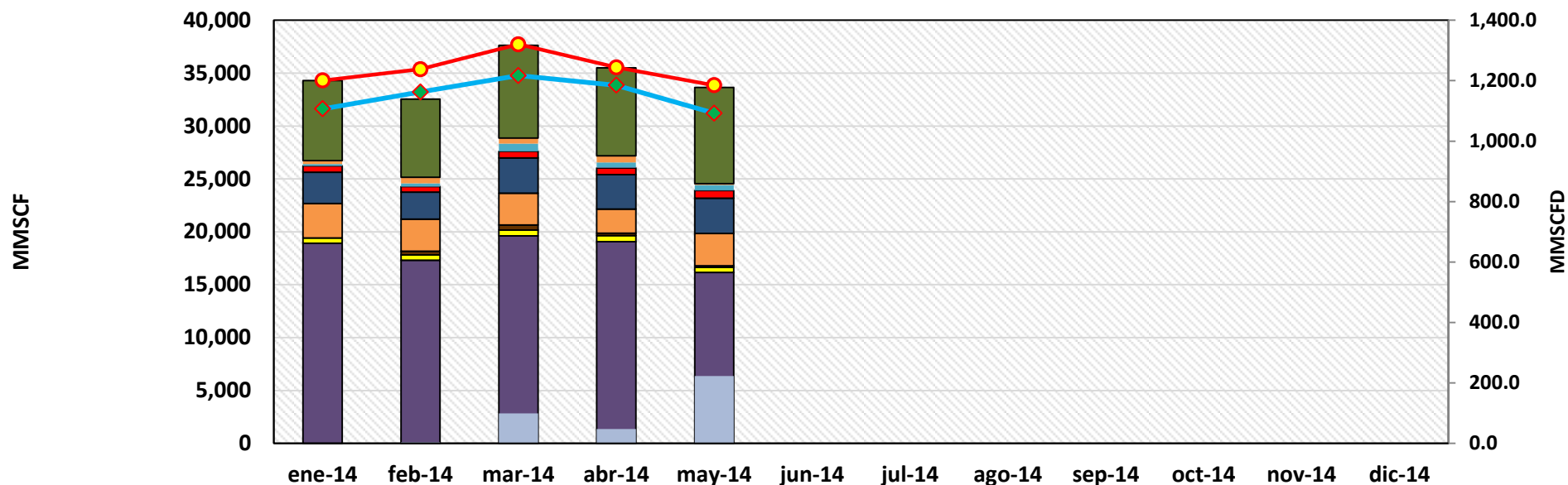
\* Los valores podría diferir del Volumen Fiscalizado.

Volumen  
(MMSCFD)

### Volumen de Gas Natural entregado diariamente por TGP en millones de pies cúbicos diarios (MMSCFD) 25 de Agosto 2004 - 31 de Mayo 2014

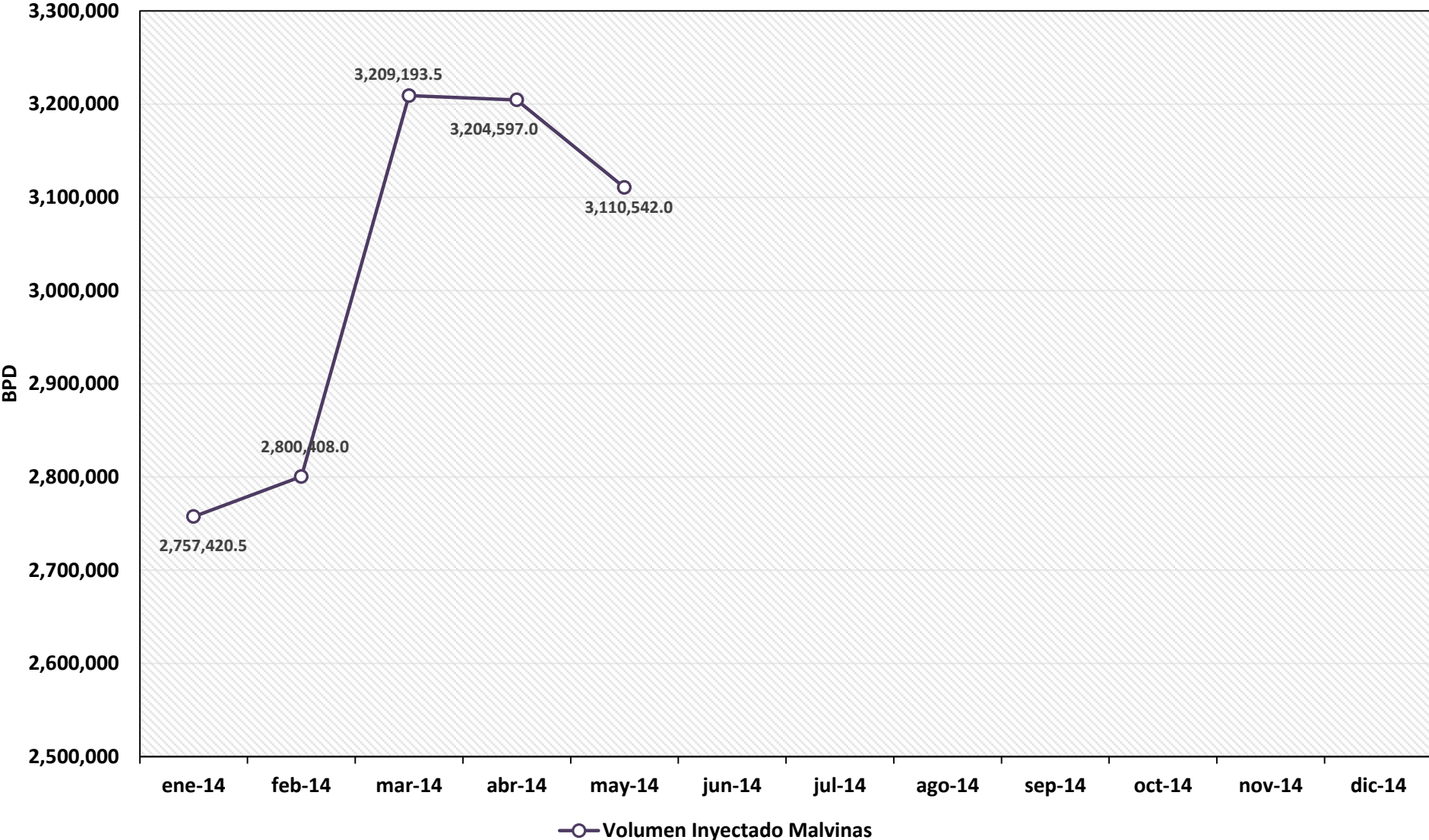


## REPORTE MENSUAL DE VOLUMENES ENTREGADOS EN EL SISTEMA DE TRANSPORTE DE GAS NATURAL (GN) DURANTE EL 2014



	ene-14	feb-14	mar-14	abr-14	may-14	jun-14	jul-14	ago-14	sep-14	oct-14	nov-14	dic-14
Lurín	7,579.6	7,383.3	8,746.2	8,304.8	9,087.7							
Chilca - Fenix Power	328.5	590.7	539.2	623.9	129.4							
Chilca -Termochilca	169.1	278.1	721.8	492.9	489.0							
Contugas - Chincha	2.2	4.7	12.8	32.8	38.0							
Egesur-Egasa	587.1	525.4	610.4	645.7	708.1							
Kallpa	2,963.4	2,560.7	3,343.8	3,242.9	3,327.1							
Chilca-Enersur	3,251.2	3,030.7	3,003.6	2,276.5	3,074.7							
Duke Energy	0.0	359.0	466.6	241.8	151.8							
Humay	510.7	498.4	558.3	573.0	464.0							
Planta Melchorita	18,912.5	17,307.8	19,614.7	19,057.4	16,163.6							
Contugas - Chincha	0.0	4.1	99.5	47.1	222.6							
Total Transportado GN	34,304.2	35,368.0	37,716.9	35,538.9	33,856.1							
Promedio Total Transportado (MMSCFD)	1,106.59	1,162.24	1,216.67	1,184.63	1,092.13							

# REPORTE MENSUAL DE VOLUMENES ENTREGADOS EN EL SISTEMA DE TRANSPORTE DE LIQUIDOS DE GAS NATURAL (LGN) DURANTE EL 2014



# VOLUMEN PROMEDIO DIARIO DE LÍQUIDOS DE GAS NATURAL TRANSPORTADO POR TGP EN BARRILES POR DÍA (BPD)

Agosto 2004 - Mayo 2014

