

REPORTE DIARIO DE LA OPERACIÓN\* DE LOS SISTEMAS DE TRANSPORTE DE GAS NATURAL (GN) Y LÍQUIDOS DE GAS NATURAL (LGN)

CONCESIONARIO: TRANSPORTADORA DE GAS DEL PERU S.A.

PERIODO: Febrero 2014

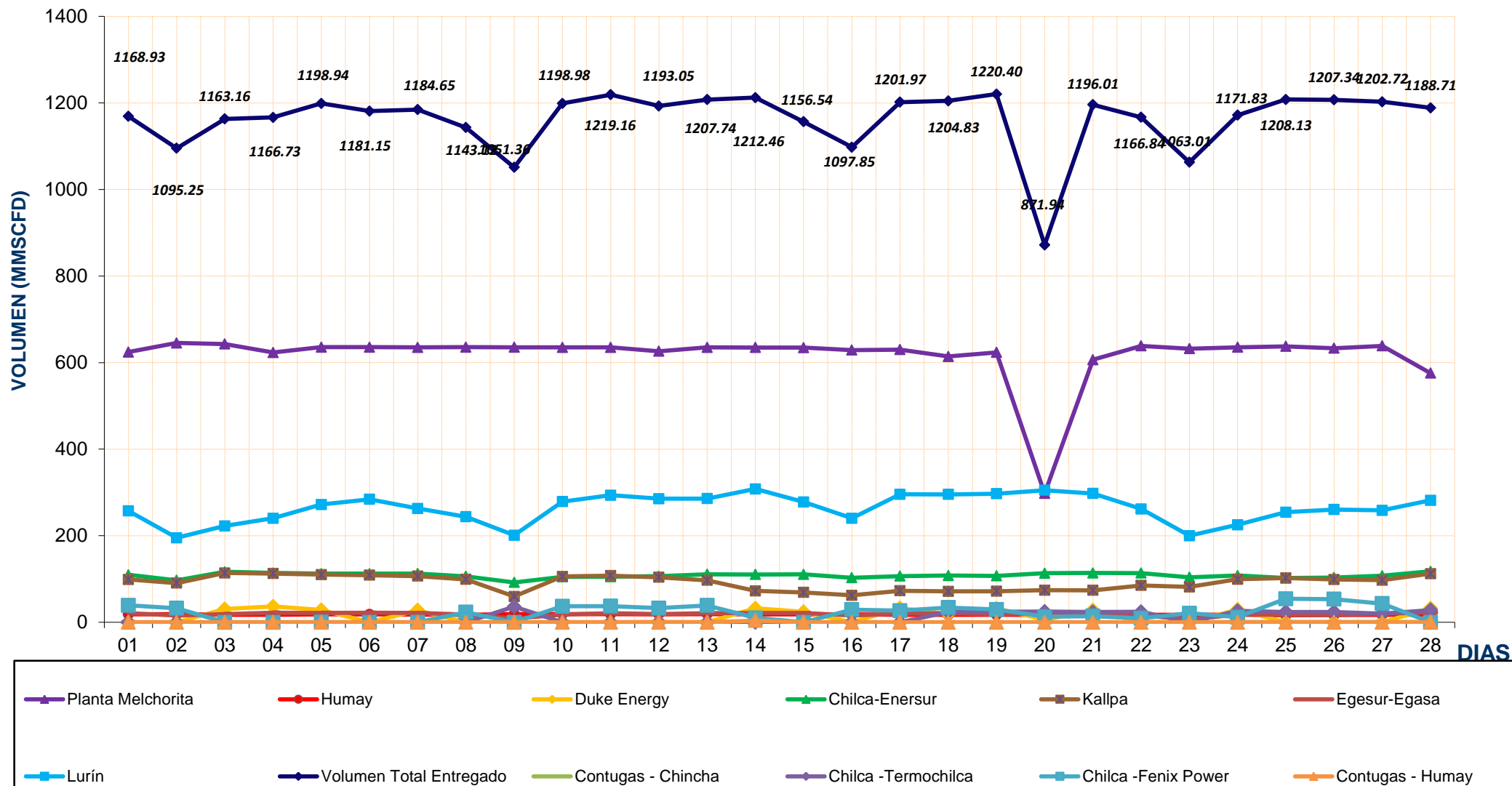
Entregas del Sistema de Transporte de Gas Natural (MMSCFD) <sup>1</sup>															Sistema de Transporte de Líquidos de Gas Natural (BPD) <sup>2</sup>		
Días	Ducto Principal PLNG			Ducto TGP											Total Volumen Entregado	Días	Volumen Bombeado Malvinas
	Chiquintirca	C.U.A	Planta Melchorita	Humay	Duke Energy	Enersur	Kallpa	Egasa / Egesur	Chincha - Contugas	Humay - Contugas	Chilca - Termochilca	Chilca - Fenix Power	Lurin				
01-feb-14	892.70	256.71	624.48	18.35	0.00	109.73	98.93	20.87	0.08	0.00	0.00	39.06	257.43	1168.93	01-feb-14	105,211.00	
02-feb-14	792.87	184.03	645.39	18.80	0.00	97.04	90.53	15.71	0.07	0.00	0.00	32.52	195.19	1095.25	02-feb-14	93,050.00	
03-feb-14	892.03	230.16	642.85	17.49	30.48	116.77	113.88	18.99	0.08	0.00	0.00	0.00	222.61	1163.16	03-feb-14	103,566.00	
04-feb-14	879.65	255.23	623.43	17.53	36.49	113.96	112.66	22.34	0.08	0.00	0.00	0.00	240.24	1166.73	04-feb-14	102,658.00	
05-feb-14	884.07	269.79	635.67	18.17	28.47	112.36	110.27	21.66	0.07	0.00	0.00	0.26	271.99	1198.94	05-feb-14	101,190.50	
06-feb-14	881.09	255.38	635.59	18.16	0.00	112.24	108.94	21.85	0.07	0.00	0.00	0.00	284.31	1181.15	06-feb-14	101,268.00	
07-feb-14	881.62	258.33	635.28	17.75	27.72	112.69	106.74	21.46	0.07	0.00	0.00	0.00	262.94	1184.65	07-feb-14	103,448.50	
08-feb-14	865.96	227.55	635.65	17.52	0.00	106.10	99.22	17.61	0.07	0.00	0.00	23.23	243.72	1143.12	08-feb-14	100,781.00	
09-feb-14	860.23	178.07	635.55	18.64	0.00	92.05	59.64	8.49	0.07	0.00	35.85	0.00	201.07	1051.36	09-feb-14	101,970.50	
10-feb-14	877.62	266.47	635.23	19.11	0.00	105.04	105.98	17.53	0.07	0.00	0.00	37.08	278.93	1198.98	10-feb-14	102,087.00	
11-feb-14	878.50	281.04	635.05	18.80	0.00	105.40	107.63	21.17	0.08	0.00	0.00	37.35	293.67	1219.16	11-feb-14	102,699.00	
12-feb-14	876.17	262.96	626.19	18.55	0.69	106.30	104.03	18.94	0.08	0.00	0.00	32.67	285.60	1193.05	12-feb-14	88,022.00	
13-feb-14	884.19	268.41	635.12	18.90	0.00	110.88	97.00	20.85	0.08	0.00	0.00	39.01	285.91	1207.74	13-feb-14	116,568.00	
14-feb-14	895.65	274.54	635.01	18.40	32.06	110.56	72.65	21.38	0.07	3.99	0.00	10.17	308.17	1212.46	14-feb-14	101,735.00	
15-feb-14	916.21	247.63	634.59	18.28	24.24	110.81	69.13	21.50	0.07	0.00	0.00	0.00	277.91	1156.54	15-feb-14	97,628.00	
16-feb-14	907.97	205.58	628.99	18.28	0.00	102.81	62.22	15.82	0.07	0.00	0.00	29.24	240.42	1097.85	16-feb-14	101,564.00	
17-feb-14	9168.24	275.30	630.15	17.01	32.67	106.73	72.85	19.82	0.08	0.00	0.00	26.91	295.75	1201.97	17-feb-14	102,679.00	
18-feb-14	901.96	293.89	614.19	17.49	19.00	108.13	71.39	21.26	0.24	0.00	23.56	34.15	295.42	1204.83	18-feb-14	102,695.00	
19-feb-14	904.05	297.81	623.49	17.34	31.65	107.20	71.79	17.95	0.23	0.00	24.32	29.44	297.00	1220.40	19-feb-14	101,624.50	
20-feb-14	709.18	257.54	297.58	17.37	5.71	113.33	74.09	21.14	0.08	0.00	24.72	12.78	305.14	871.94	20-feb-14	96,403.00	
21-feb-14	752.18	210.03	606.53	16.79	27.53	114.04	73.88	21.71	0.23	0.00	23.51	14.11	297.68	1196.01	21-feb-14	99,087.00	
22-feb-14	797.28	186.50	638.62	17.33	0.64	113.72	85.21	15.96	0.16	0.00	24.14	9.23	261.82	1166.84	22-feb-14	101,151.00	
23-feb-14	757.72	93.25	632.28	17.53	0.00	104.02	81.73	6.45	0.27	0.00	0.00	20.81	199.93	1063.01	23-feb-14	96,862.00	
24-feb-14	819.09	205.57	635.36	17.72	29.34	108.14	99.55	18.00	0.43	0.00	26.17	11.76	225.36	1171.83	24-feb-14	102,478.00	
25-feb-14	864.26	265.02	637.52	16.00	0.00	102.15	102.34	17.30	0.43	0.00	23.85	54.33	254.22	1208.13	25-feb-14	100,267.00	
26-feb-14	873.63	271.26	633.42	16.53	0.00	103.43	98.82	16.90	0.46	0.00	23.85	53.40	260.53	1207.34	26-feb-14	101,904.00	
27-feb-14	866.65	275.62	638.72	17.00	0.00	107.37	97.25	20.14	0.47	0.00	20.10	43.14	258.54	1202.72	27-feb-14	91,342.00	
28-feb-14	839.98	340.00	575.80	17.58	32.32	117.71	112.33	22.61	0.46	0.06	28.05	0.00	281.80	1188.71	28-feb-14	80,469.00	
<b>TOTAL</b>	<b>32,320.76</b>	<b>6,893.67</b>	<b>17,307.77</b>	<b>498.39</b>	<b>359.01</b>	<b>3,030.71</b>	<b>2,560.67</b>	<b>525.41</b>	<b>4.71</b>	<b>4.05</b>	<b>278.14</b>	<b>590.65</b>	<b>7,383.29</b>	<b>32,542.81</b>	<b>TOTAL</b>	<b>2,800,408.00</b>	
<b>PROMEDIO</b>	<b>1,154.31</b>	<b>246.20</b>	<b>618.13</b>	<b>17.80</b>	<b>12.82</b>	<b>108.24</b>	<b>91.45</b>	<b>18.76</b>	<b>0.17</b>	<b>0.14</b>	<b>9.93</b>	<b>21.09</b>	<b>263.69</b>	<b>1,162.24</b>	<b>PROMEDIO</b>	<b>100,014.57</b>	

(\*) Los datos de volúmenes de Gas Natural y Líquidos de Gas Natural son operativos y no necesariamente coinciden con datos fiscalizados.

<sup>1</sup> MMSCFD: Millones de Pies Cúbicos Estándar por Día

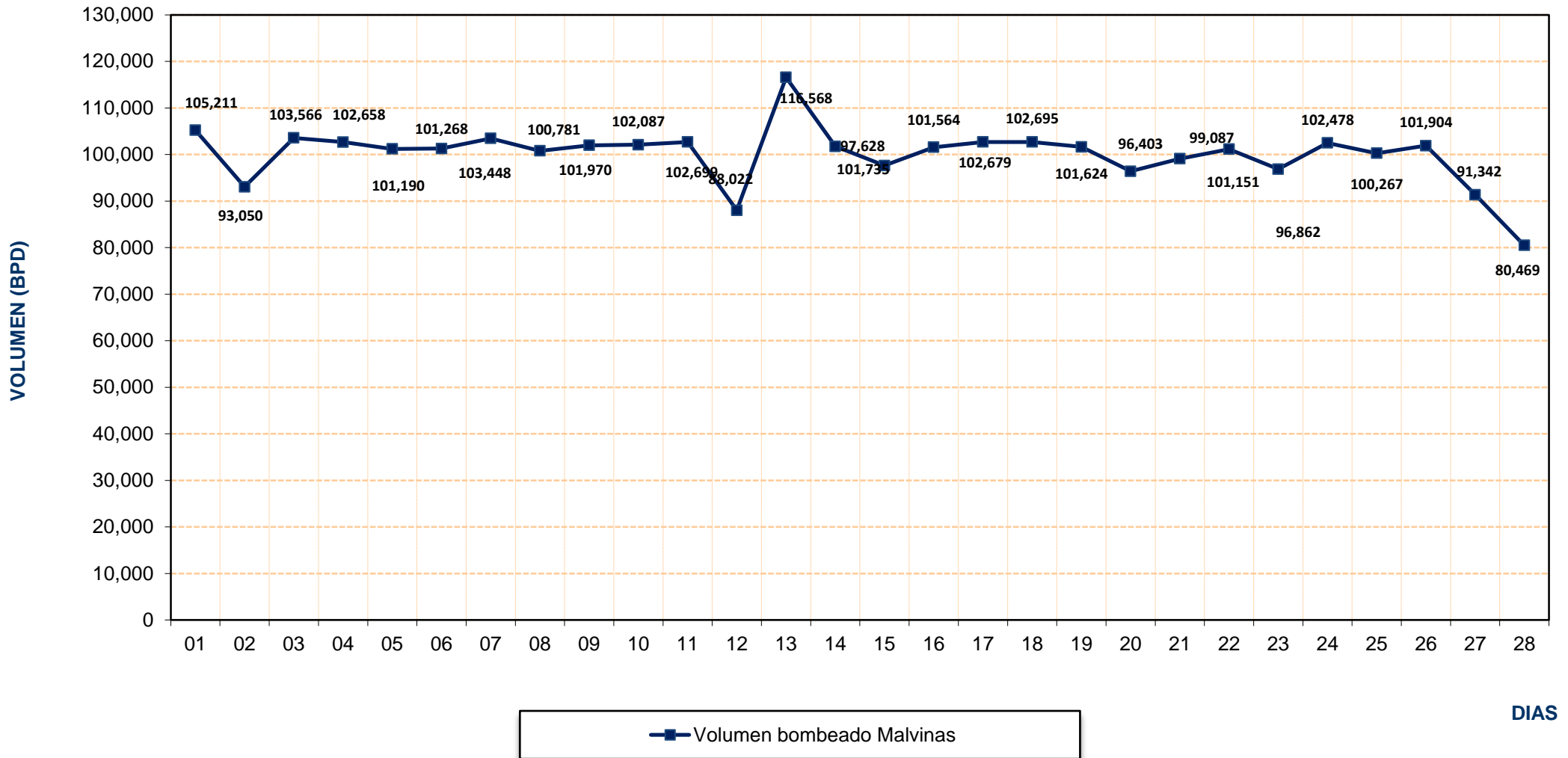
<sup>2</sup> BPD: Barriles Por Día

## REPORTE OPERATIVO\* DEL SISTEMA DE TRANSPORTE DE GAS NATURAL (GN) DURANTE FEBRERO 2014



\* Los valores podría diferir del Volumen Fiscalizado.

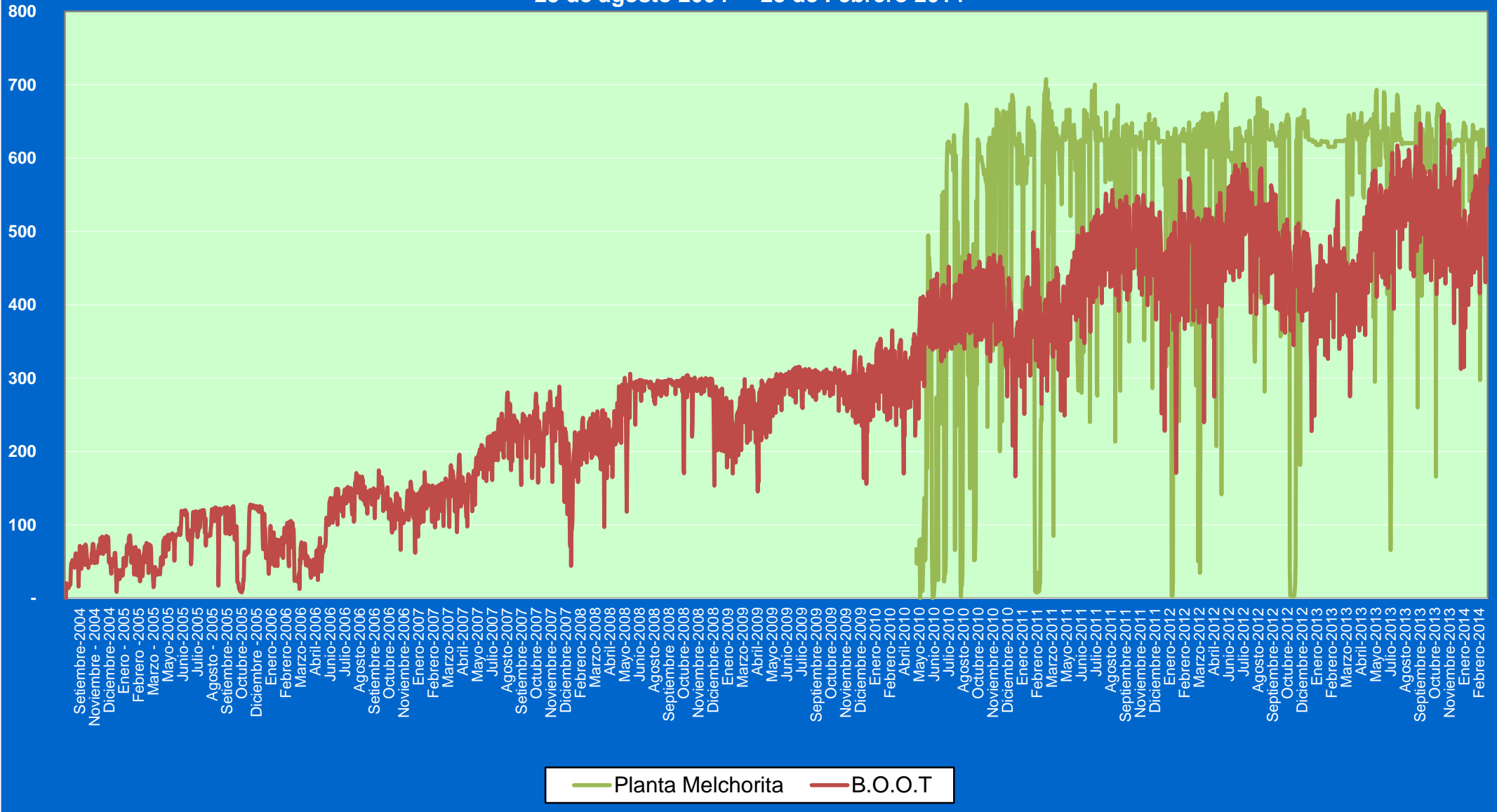
## REPORTE OPERATIVO\* DEL SISTEMA DE TRANSPORTE DE LÍQUIDOS DE GAS NATURAL (LGN) DURANTE FEBRERO 2014



\* Los valores podría diferir del Volumen Fiscalizado.

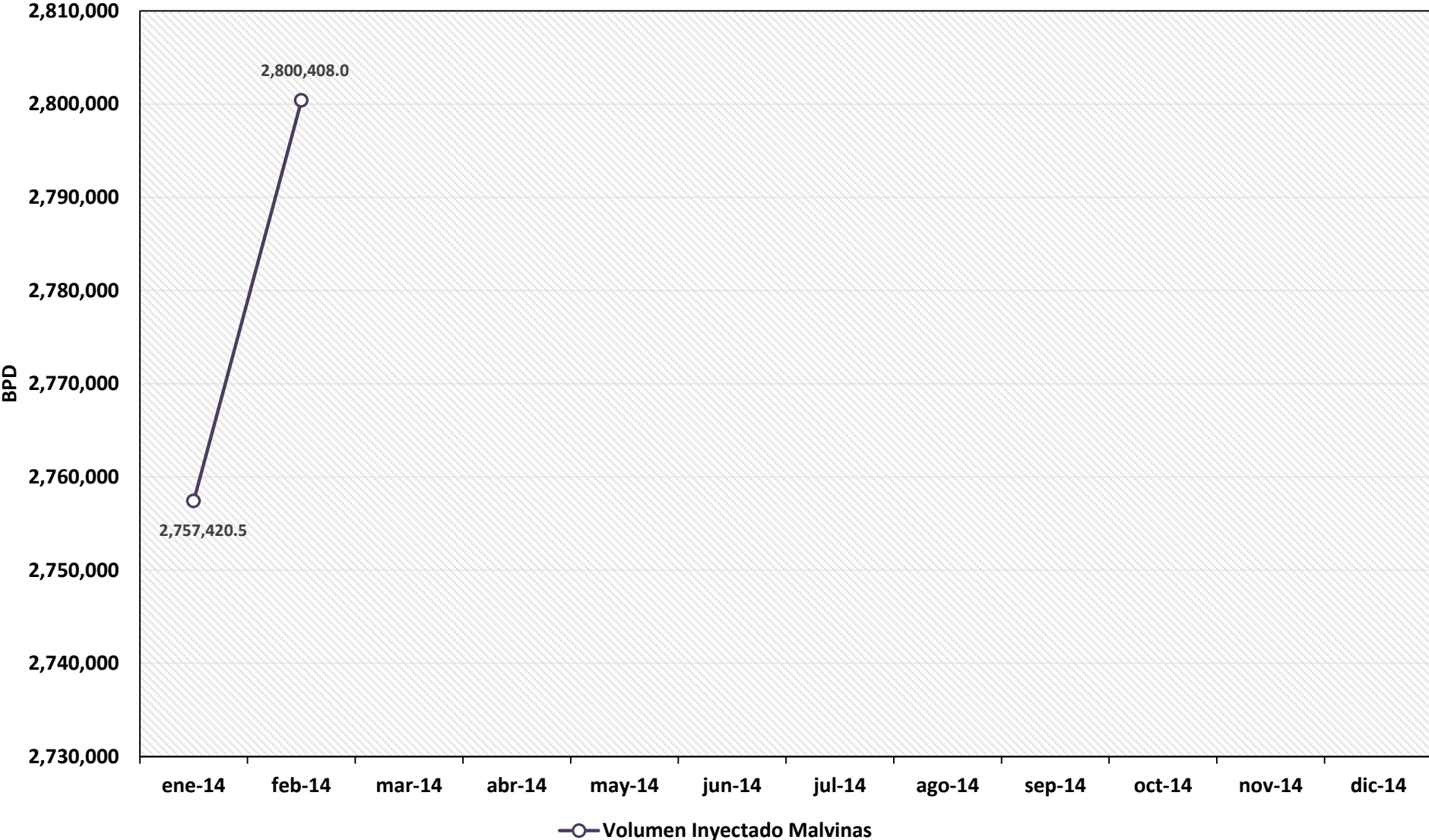
Volumen  
(MMSCFD)

### Volumen de Gas Natural entregado diariamente por TGP en millones de pies cúbicos diarios (MMSCFD) 25 de agosto 2004 - 28 de Febrero 2014





# REPORTE MENSUAL DE VOLUMENES ENTREGADOS EN EL SISTEMA DE TRANSPORTE DE LIQUIDOS DE GAS NATURAL (LGN) DURANTE EL 2014



# VOLUMEN PROMEDIO DIARIO DE LÍQUIDOS DE GAS NATURAL TRANSPORTADO POR TGP EN BARRILES POR DÍA (BPD)

Agosto 2004 - Febrero 2014

