

REPORTES DIARIOS DE LA OPERACIÓN DE LOS SISTEMAS DE TRANSPORTE DE GAS NATURAL (GN) Y LÍQUIDOS DE GAS NATURAL (LGN)

CONCESIONARIO: TRANSPORTADORA DE GAS DEL PERU S.A.

PERIODO: DICIEMBRE 2019

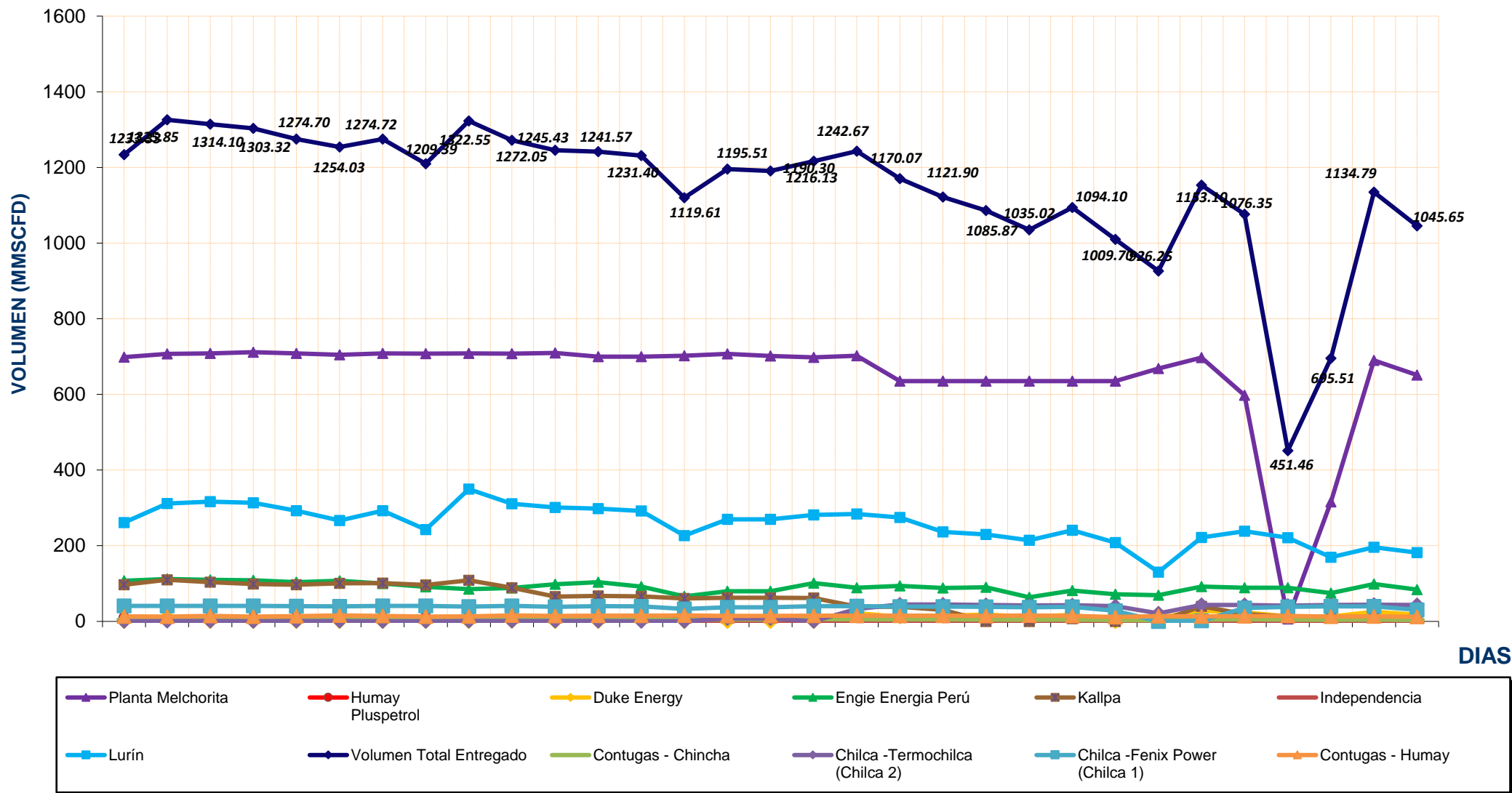
Entregas del Sistema de Transporte de Gas Natural (MMSCFD ¹)															Sistema de Transporte de Líquidos de Gas Natural (BPD ²)	
Días	Ducto Principal PLNG			Ducto TGP										Total Volumen Entregado	Días	Volumen Bombeado Malvinas
	Chiquinirca	C.U.A	Planta Melchorita	Humay	Duke Energy	Engle Energía Perú	Kallpa	Independencia	Chincha - Contugas	Humay - Contugas	Chilca - Termochilca	Chilca - Fenix Power	Lurín			
1-Dic-19	954.80	243.15	698.56	10.97	0.00	107.42	97.19	0.00	3.82	13.20	0.54	40.75	260.87	1233.33	1-Dic-19	87,941.00
2-Dic-19	956.05	280.32	707.35	11.64	12.79	112.02	110.03	0.23	6.12	12.34	0.77	40.80	311.77	1325.85	2-Dic-19	88,998.00
3-Dic-19	960.48	277.67	708.43	11.26	0.00	110.03	103.95	0.59	7.01	14.70	0.75	40.99	316.38	1314.10	3-Dic-19	85,569.00
4-Dic-19	966.83	268.85	711.62	10.31	0.00	108.35	98.65	0.45	6.62	12.52	0.59	40.98	313.23	1303.32	4-Dic-19	81,799.00
5-Dic-19	965.65	258.96	708.62	11.33	0.00	103.93	97.06	0.81	5.57	13.69	0.74	40.44	292.51	1274.70	5-Dic-19	96,585.00
6-Dic-19	949.41	242.01	704.86	11.58	0.00	107.08	100.40	1.38	5.60	15.78	0.73	39.90	266.72	1254.03	6-Dic-19	85,563.00
7-Dic-19	938.06	246.88	708.23	11.22	0.00	100.26	101.06	1.13	4.86	14.22	0.60	40.79	292.35	1274.72	7-Dic-19	85,662.00
8-Dic-19	952.47	216.01	707.95	11.31	0.00	91.31	96.60	0.86	4.59	12.74	0.46	40.92	242.67	1209.39	8-Dic-19	88,497.00
9-Dic-19	981.36	277.10	708.08	11.56	0.00	85.33	108.37	0.47	5.69	13.39	0.80	39.25	349.61	1322.55	9-Dic-19	89,885.00
10-Dic-19	973.75	263.10	707.46	11.80	0.23	88.04	89.02	0.61	6.76	15.46	0.77	41.11	310.78	1272.05	10-Dic-19	89,878.00
11-Dic-19	956.96	236.16	709.35	11.52	0.00	97.89	65.53	0.17	5.84	14.44	0.76	38.56	301.36	1245.43	11-Dic-19	88,432.00
12-Dic-19	949.14	238.32	699.82	11.45	0.00	103.39	67.35	0.26	5.30	15.21	0.71	40.13	297.94	1241.57	12-Dic-19	88,616.00
13-Dic-19	946.36	236.84	699.52	11.44	10.13	91.74	66.01	0.39	5.20	15.01	0.56	39.55	291.84	1231.40	13-Dic-19	88,192.00
14-Dic-19	867.05	144.52	702.04	10.93	0.00	66.35	60.62	0.00	3.83	15.61	0.39	33.02	226.81	1119.61	14-Dic-19	76,602.00
15-Dic-19	888.92	195.60	706.79	11.31	0.00	79.86	62.23	0.00	5.43	14.54	7.94	37.52	269.89	1195.51	15-Dic-19	76,602.00
16-Dic-19	888.92	195.60	701.58	11.31	0.00	79.86	62.23	0.00	5.43	14.54	7.94	37.52	269.89	1190.30	16-Dic-19	92,385.00
17-Dic-19	898.83	214.54	698.01	11.01	0.00	101.30	62.11	0.52	5.60	15.21	0.54	40.42	281.42	1216.13	17-Dic-19	86,028.00
18-Dic-19	909.98	223.07	702.41	10.81	22.06	88.91	39.19	0.97	5.35	15.15	33.23	40.63	283.97	1242.67	18-Dic-19	81,058.00
19-Dic-19	920.24	259.22	635.08	11.13	11.76	93.55	38.65	0.66	5.49	15.36	44.54	38.96	274.89	1170.07	19-Dic-19	95,139.00
20-Dic-19	872.03	211.05	635.10	11.79	14.70	88.22	30.67	0.79	5.25	15.08	44.72	39.07	236.52	1121.90	20-Dic-19	83,576.00
21-Dic-19	804.04	175.26	635.14	11.14	18.37	89.98	0.00	0.11	4.83	14.62	43.51	38.53	229.65	1085.87	21-Dic-19	84,302.00
22-Dic-19	790.02	139.00	635.01	10.66	12.21	63.68	0.00	0.27	3.98	15.45	42.38	37.02	214.35	1035.02	22-Dic-19	86,437.00
23-Dic-19	825.31	180.25	635.04	11.06	17.41	81.48	6.99	0.26	4.63	14.78	42.98	38.43	241.04	1094.10	23-Dic-19	86,721.00
24-Dic-19	768.51	108.00	635.03	10.74	0.00	71.95	0.00	0.26	3.61	11.60	40.28	28.02	208.20	1009.70	24-Dic-19	81,484.00
25-Dic-19	687.04	22.30	668.57	10.61	9.75	69.06	0.00	0.25	2.67	13.95	21.04	0.00	130.36	926.25	25-Dic-19	78,955.00
26-Dic-19	852.85	166.48	696.98	11.19	27.70	92.01	39.99	0.18	4.62	13.53	43.57	1.57	221.76	1153.10	26-Dic-19	89,882.00
27-Dic-19	866.21	171.86	597.78	10.55	23.65	88.75	19.31	0.41	5.00	13.85	43.24	35.40	238.41	1076.35	27-Dic-19	83,208.00
28-Dic-19	64.93	292.10	6.74	10.07	13.10	88.81	12.60	0.31	4.87	14.20	41.38	38.40	220.97	451.46	28-Dic-19	25,442.00
29-Dic-19	240.17	180.40	315.79	10.47	12.77	74.84	12.02	0.00	4.17	12.84	43.27	39.65	169.70	695.51	29-Dic-19	67,380.00
30-Dic-19	867.92	145.75	690.12	10.69	25.30	98.88	11.31	0.30	4.75	13.28	44.09	39.86	196.22	1134.79	30-Dic-19	89,216.00
31-Dic-19	831.04	97.43	651.11	10.52	17.80	84.07	10.71	0.00	3.67	12.23	43.20	30.77	181.58	1045.65	31-Dic-19	82,745.00
TOTAL	26,295.33	6,407.80	20,128.17	343.39	249.73	2,808.37	1,669.85	12.66	156.14	438.49	597.00	1,118.97	7,943.66	35,466.42	TOTAL	2,592,779.00
PROMEDIO	848.24	206.70	649.30	11.08	8.06	90.59	53.87	0.41	5.04	14.14	19.26	36.10	256.25	1,144.08	PROMEDIO	83,638.03

(*) Los datos de volúmenes de Gas Natural y Líquidos de Gas Natural son operativos y no necesariamente coinciden con datos fiscalizados.

¹ MMSCFD: Millones de Pies Cúbicos Estándar por Día

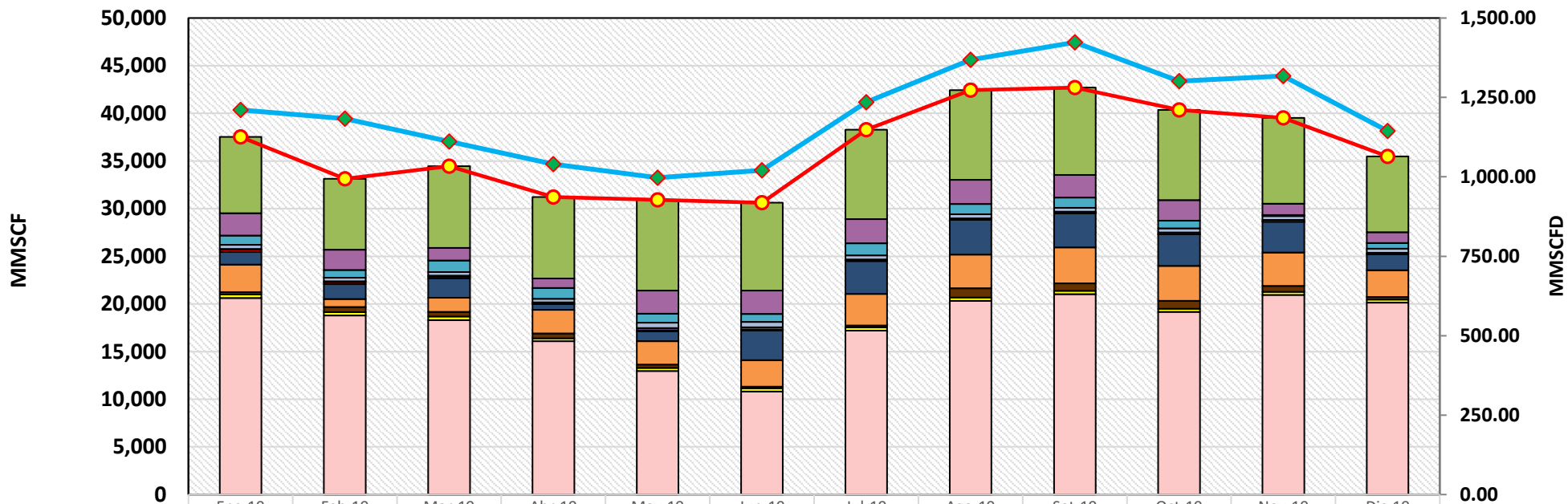
² BPD: Barriles Por Día

REPORTE OPERATIVO* DEL SISTEMA DE TRANSPORTE DE GAS NATURAL (GN) DURANTE DICIEMBRE 2019



* Los valores podría diferir del Volumen Fiscalizado.

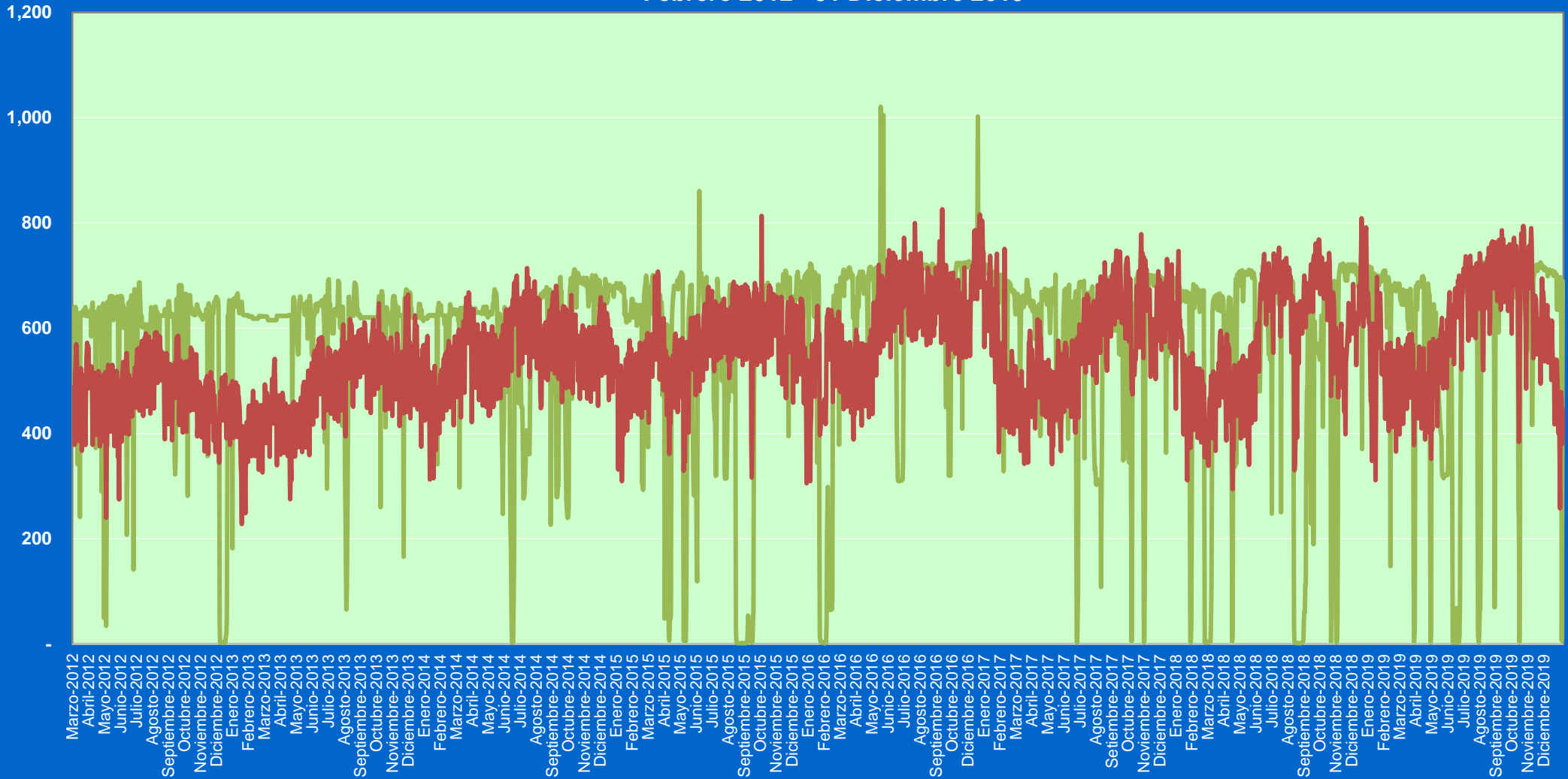
REPORTE MENSUAL DE VOLUMENES ENTREGADOS EN EL SISTEMA DE TRANSPORTE DE GAS NATURAL (GN) DURANTE EL 2019



	Ene-19	Feb-19	Mar-19	Abr-19	May-19	Jun-19	Jul-19	Ago-19	Set-19	Oct-19	Nov-19	Dic-19
Lurín	8,025.7	7,438.7	8,572.2	8,533.4	9,499.6	9,209.0	9,381.4	9,413.4	9,158.1	9,446.3	9,018.7	7,943.7
Chilca - Fenix Power	2,330.7	2,147.5	1,327.9	996.4	2,449.6	2,451.4	2,530.5	2,521.7	2,369.4	2,169.4	1,182.9	1,119.0
Chilca - Termochilca	967.6	789.9	1,199.9	1,145.2	934.0	832.4	1,281.3	1,080.8	1,088.8	806.1	115.0	597.0
Contugas - Humay	437.7	392.1	383.9	363.4	556.7	586.1	418.8	417.7	398.8	430.7	398.0	438.5
Contugas - Chincha	79.5	70.0	89.4	160.4	241.3	229.8	159.5	168.3	167.9	178.0	177.0	156.1
Independencia	235.7	218.8	187.8	40.6	90.7	94.0	0.9	3.1	0.4	8.7	7.8	12.7
Kallpa	1,322.2	1,576.4	2,040.5	593.9	1,047.5	3,103.4	3,450.4	3,638.2	3,595.7	3,311.9	3,244.1	1,669.8
Engie Energia Perú	2,902.3	821.1	1,497.2	2,484.4	2,463.1	2,799.6	3,337.6	3,532.5	3,752.9	3,657.1	3,496.1	2,808.4
Duke Energy	243.5	541.3	479.2	504.0	332.5	159.2	175.1	984.8	799.2	855.4	623.1	249.7
Humay	373.0	341.2	361.4	292.5	342.1	344.3	350.8	350.1	345.1	326.3	337.2	343.4
Planta Melchorita	20,619.1	18,798.5	18,312.7	16,097.7	12,958.4	10,804.9	17,202.7	20,314.7	21,023.7	19,153.0	20,932.9	20,128.2
Total Transportado GN	37,536.9	33,135.4	34,452.3	31,211.9	30,915.4	30,614.2	38,289.0	42,425.2	42,700.0	40,342.9	39,532.7	35,466.4
Promedio Total Transportado (MMSCFD)	1,210.87	1,183.41	1,111.36	1,040.40	997.27	1,020.47	1,235.13	1,368.56	1,423.33	1,301.38	1,317.76	1,144.08

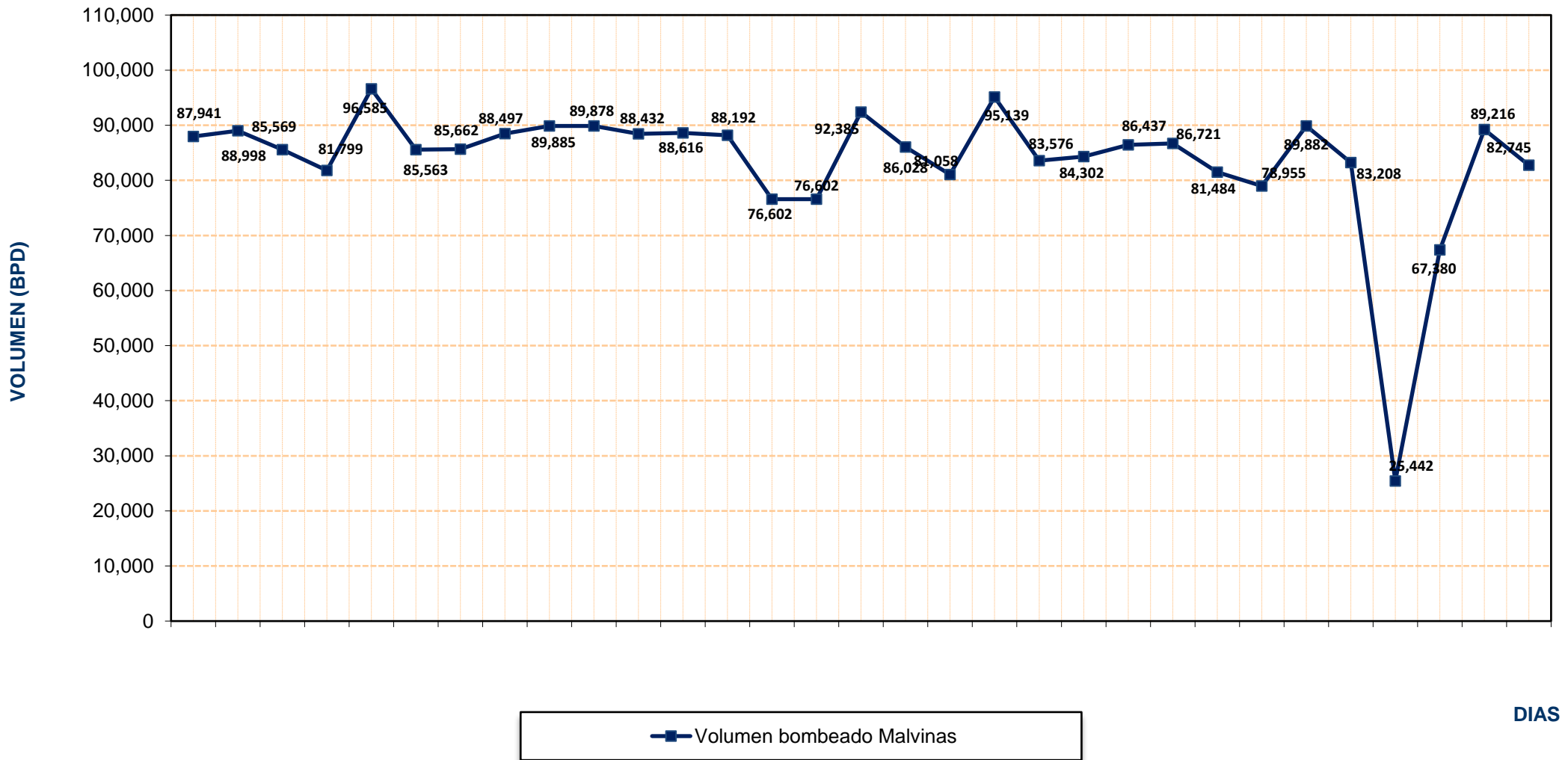
Volumen
(MMSCFD)

Volumen de Gas Natural entregado diariamente por TGP en millones de pies cúbicos diarios (MMSCFD) Febrero 2012 - 31 Diciembre 2019



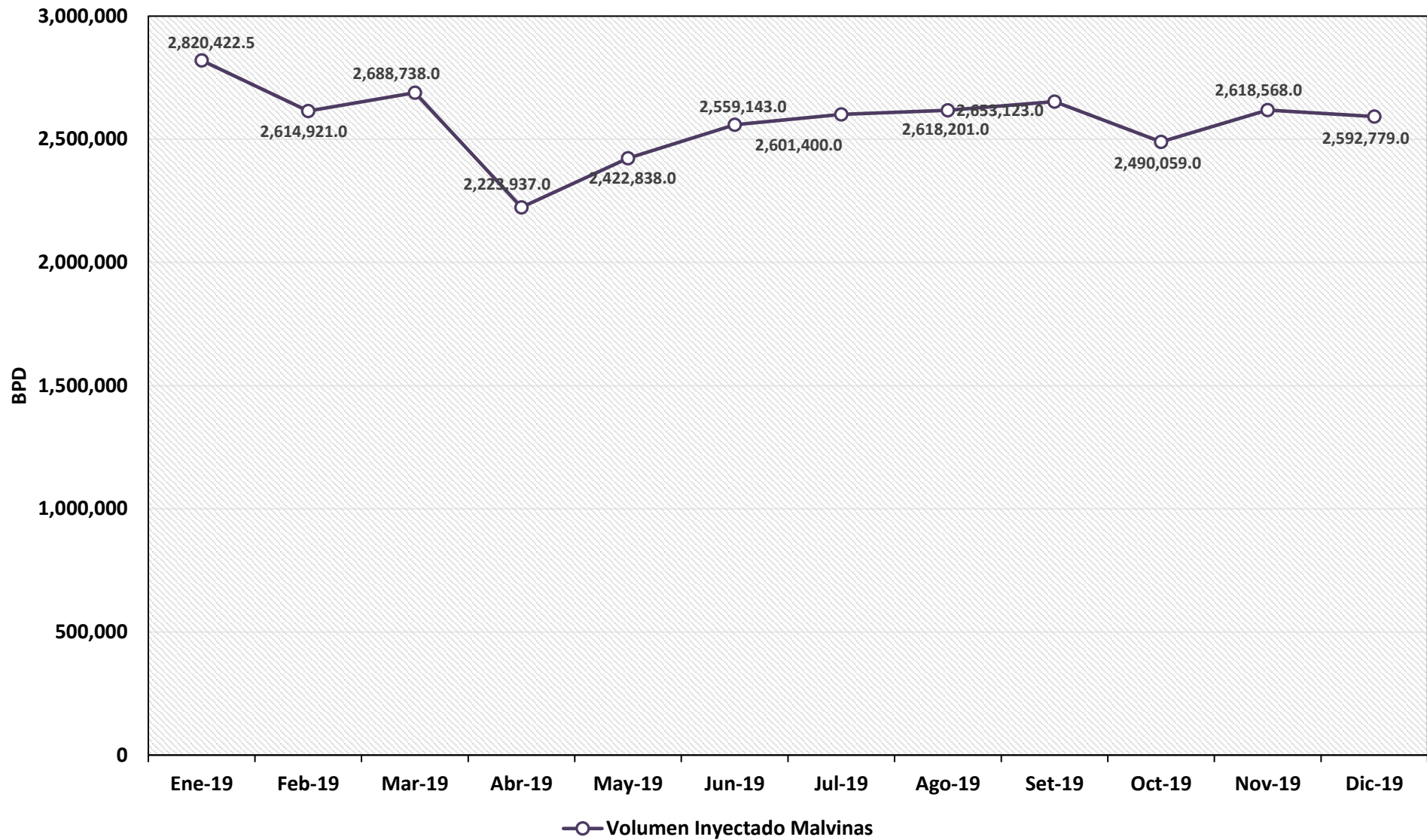
— Planta Melchorita — B.O.O.T

REPORTE OPERATIVO* DEL SISTEMA DE TRANSPORTE DE LÍQUIDOS DE GAS NATURAL (LGN) DURANTE DICIEMBRE 2019



* Los valores podría diferir del Volumen Fiscalizado.

REPORTE MENSUAL DE VOLUMENES ENTREGADOS EN EL SISTEMA DE TRANSPORTE DE LIQUIDOS DE GAS NATURAL (LGN) DURANTE EL 2019



**VOLUMEN PROMEDIO DIARIO DE LÍQUIDOS DE GAS NATURAL TRANSPORTADO POR TGP EN
BARRILES POR DÍA (BPD)
Septiembre 2012 - Diciembre 2019**

