

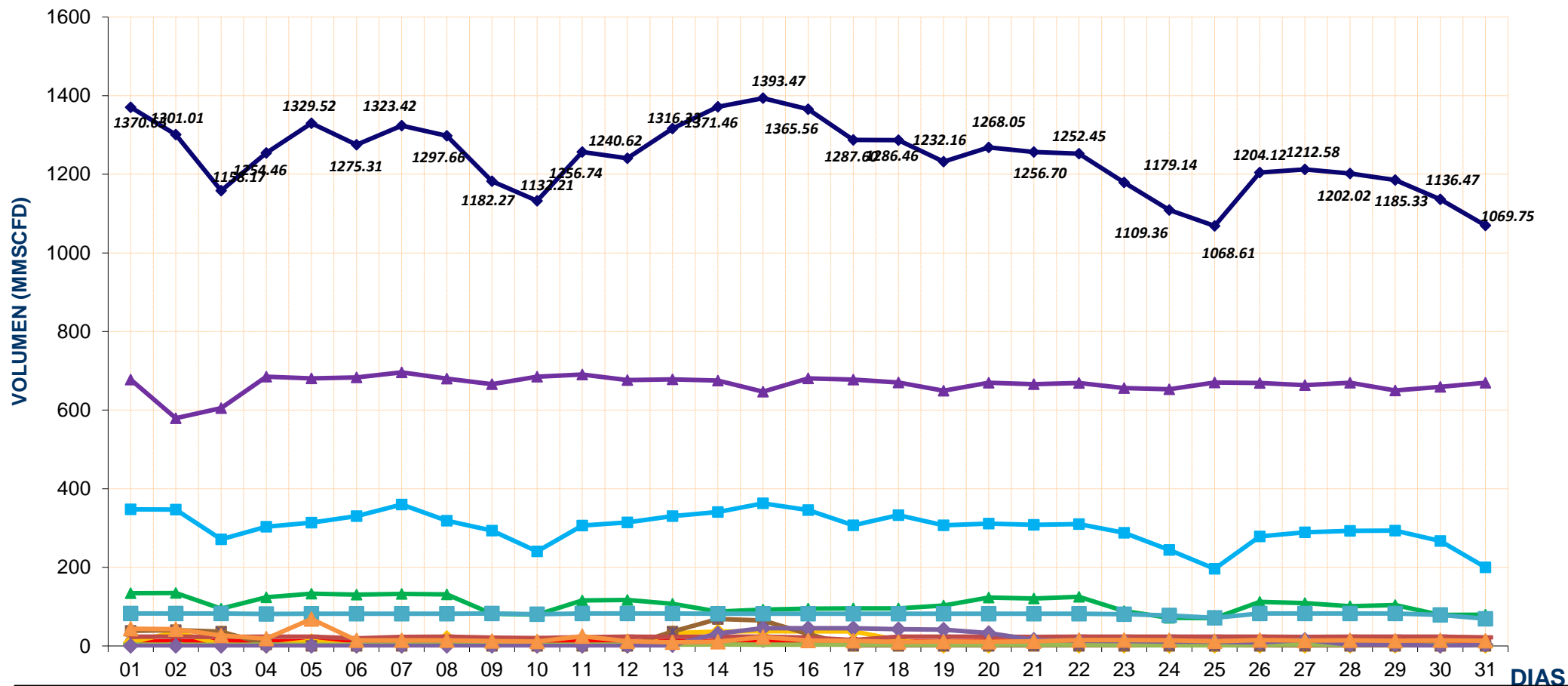
REPORTE DIARIO DE LA OPERACIÓN DE LOS SISTEMAS DE TRANSPORTE DE GAS NATURAL (GN) Y LÍQUIDOS DE GAS NATURAL (LGN)																
CONCESIONARIO: TRANSPORTADORA DE GAS DEL PERU S.A.																
PERIODO: DICIEMBRE 2017																
Entregas del Sistema de Transporte de Gas Natural (MMSCFD) <sup>1</sup>															Sistema de Transporte de Líquidos de Gas Natural (BPD) <sup>2</sup>	
Días	Ducto Principal PLNG			Ducto TGP										Total Volumen Entregado	Días	Volumen Bombeado Malvinas
	Chiquintirca	C.U.A	Planta Melchorita	Humay	Duke Energy	Engle Energía Perú	Kallpa	Independencia	Chincha - Contugas	Humay - Contugas	Chilca - Termochilca	Chilca - Fenix Power	Lurín			
01-dic-17	944.62	314.62	677.44	10.42	8.71	134.43	38.36	23.42	3.19	44.12	0.25	82.52	347.78	1370.65	01-dic-17	71,773.00
02-dic-17	926.91	377.59	579.43	12.06	35.67	134.69	40.42	23.37	3.13	42.90	0.19	82.30	346.85	1301.01	02-dic-17	89,176.50
03-dic-17	955.36	288.26	605.32	11.89	3.05	94.96	36.67	23.16	2.43	26.61	0.20	82.33	271.55	1158.17	03-dic-17	86,149.00
04-dic-17	967.95	258.07	684.71	11.71	0.00	123.78	3.82	23.39	3.40	18.63	0.27	81.67	303.07	1254.46	04-dic-17	95,743.50
05-dic-17	933.33	286.88	680.73	11.97	12.81	132.76	0.00	23.56	2.77	68.64	0.39	82.26	313.63	1329.52	05-dic-17	86,454.00
06-dic-17	933.13	268.77	683.40	11.47	0.00	130.36	0.00	19.21	3.52	14.17	0.42	82.27	330.49	1275.31	06-dic-17	96,868.00
07-dic-17	965.81	283.54	696.04	11.60	0.00	132.61	0.00	23.23	3.18	14.51	0.39	82.28	359.58	1323.42	07-dic-17	93,210.00
08-dic-17	967.92	290.73	680.35	11.67	20.27	131.43	11.90	23.40	3.10	14.58	0.26	82.22	318.48	1297.66	08-dic-17	96,207.00
09-dic-17	913.92	233.15	665.96	11.63	10.58	81.83	0.00	21.07	3.07	12.48	0.00	82.34	293.29	1182.27	09-dic-17	91,671.00
10-dic-17	851.18	167.12	685.19	11.52	0.00	79.83	0.00	20.21	2.74	11.42	0.00	80.67	240.64	1132.21	10-dic-17	92,539.00
11-dic-17	904.33	230.55	690.22	11.68	0.00	115.53	0.00	22.64	3.59	24.69	0.00	82.30	306.09	1256.74	11-dic-17	94,275.00
12-dic-17	927.87	248.48	676.42	11.72	0.00	117.23	0.00	23.30	3.08	12.14	0.25	82.30	314.19	1240.62	12-dic-17	88,306.00
13-dic-17	961.63	293.93	678.02	11.65	32.93	107.02	36.23	23.20	3.33	9.23	2.33	82.30	330.10	1316.33	13-dic-17	89,249.00
14-dic-17	1024.29	341.81	675.04	11.50	36.63	87.32	68.60	23.39	3.73	10.43	31.88	82.29	340.66	1371.46	14-dic-17	89,966.00
15-dic-17	1112.69	409.50	646.99	11.52	37.54	92.17	65.05	23.41	3.34	23.17	45.28	82.27	362.72	1393.47	15-dic-17	89,769.00
16-dic-17	1010.31	349.97	680.90	11.35	37.26	94.89	30.19	21.15	3.29	14.05	44.82	82.26	345.38	1365.56	16-dic-17	95,708.00
17-dic-17	969.85	291.57	677.70	11.41	37.10	95.73	0.00	15.10	3.05	13.20	44.82	82.22	307.26	1287.60	17-dic-17	96,345.00
18-dic-17	962.90	294.35	670.25	11.38	14.77	95.76	0.00	23.35	3.20	10.22	42.40	82.17	332.97	1286.46	18-dic-17	95,286.00
19-dic-17	870.00	266.40	649.38	11.37	0.00	103.03	0.00	23.33	2.90	11.03	41.61	82.25	307.24	1232.16	19-dic-17	65,147.00
20-dic-17	955.32	283.73	669.62	12.26	0.00	122.89	0.00	23.35	3.18	10.97	32.56	82.23	311.00	1268.05	20-dic-17	102,300.00
21-dic-17	946.85	274.32	666.03	11.98	13.51	120.70	0.00	23.05	3.32	11.89	15.86	82.15	308.20	1256.70	21-dic-17	94,391.00
22-dic-17	915.59	270.07	669.25	12.16	0.00	125.24	0.00	23.29	2.58	14.75	12.88	82.26	310.03	1252.45	22-dic-17	94,807.00
23-dic-17	887.08	233.93	655.92	12.35	0.00	88.59	0.00	23.32	2.77	14.92	12.77	80.50	287.99	1179.14	23-dic-17	95,594.00
24-dic-17	846.44	187.25	653.24	12.22	0.00	71.47	0.00	23.32	1.60	14.32	11.21	77.64	244.34	1109.36	24-dic-17	91,669.00
25-dic-17	800.29	130.45	670.33	11.80	0.00	70.77	0.00	23.41	1.60	12.20	10.56	71.62	196.32	1068.61	25-dic-17	88,216.00
26-dic-17	868.58	216.88	669.24	11.76	0.00	112.28	0.00	23.36	2.71	14.98	8.81	82.31	278.67	1204.12	26-dic-17	87,709.00
27-dic-17	929.85	249.84	663.64	11.69	0.00	108.79	0.00	23.25	3.68	14.01	15.75	82.36	289.41	1212.58	27-dic-17	95,578.00
28-dic-17	875.43	229.09	669.67	11.72	0.00	101.30	0.00	23.35	3.51	14.17	3.18	82.54	292.57	1202.02	28-dic-17	94,472.00
29-dic-17	886.21	238.51	650.14	12.03	0.00	104.10	0.00	23.44	3.25	13.38	3.30	82.52	293.17	1185.33	29-dic-17	94,616.00
30-dic-17	857.82	201.12	658.91	11.96	0.00	78.83	0.00	23.46	2.45	14.53	0.22	79.07	267.03	1136.47	30-dic-17	93,342.00
31-dic-17	783.64	135.56	669.60	11.62	0.00	79.38	0.00	21.51	1.50	13.02	3.45	69.35	200.31	1069.75	31-dic-17	88,414.00
<b>TOTAL</b>	<b>27,873.46</b>	<b>8,010.48</b>	<b>19,979.49</b>	<b>351.47</b>	<b>300.85</b>	<b>3,190.33</b>	<b>331.23</b>	<b>679.51</b>	<b>90.71</b>	<b>546.36</b>	<b>382.84</b>	<b>2,446.41</b>	<b>9,150.71</b>	<b>37,449.91</b>	<b>TOTAL</b>	<b>2,736,536.00</b>
<b>PROMEDIO</b>	<b>929.12</b>	<b>267.02</b>	<b>665.98</b>	<b>11.72</b>	<b>10.03</b>	<b>106.34</b>	<b>11.04</b>	<b>22.65</b>	<b>3.02</b>	<b>18.21</b>	<b>12.76</b>	<b>81.55</b>	<b>305.02</b>	<b>1,248.33</b>	<b>PROMEDIO</b>	<b>91,217.87</b>

(\*) Los datos de volúmenes de Gas Natural y Líquidos de Gas Natural son operativos y no necesariamente coinciden con datos fiscalizados.

<sup>1</sup> MMSCFD: Millones de Pies Cúbicos Estándar por Día

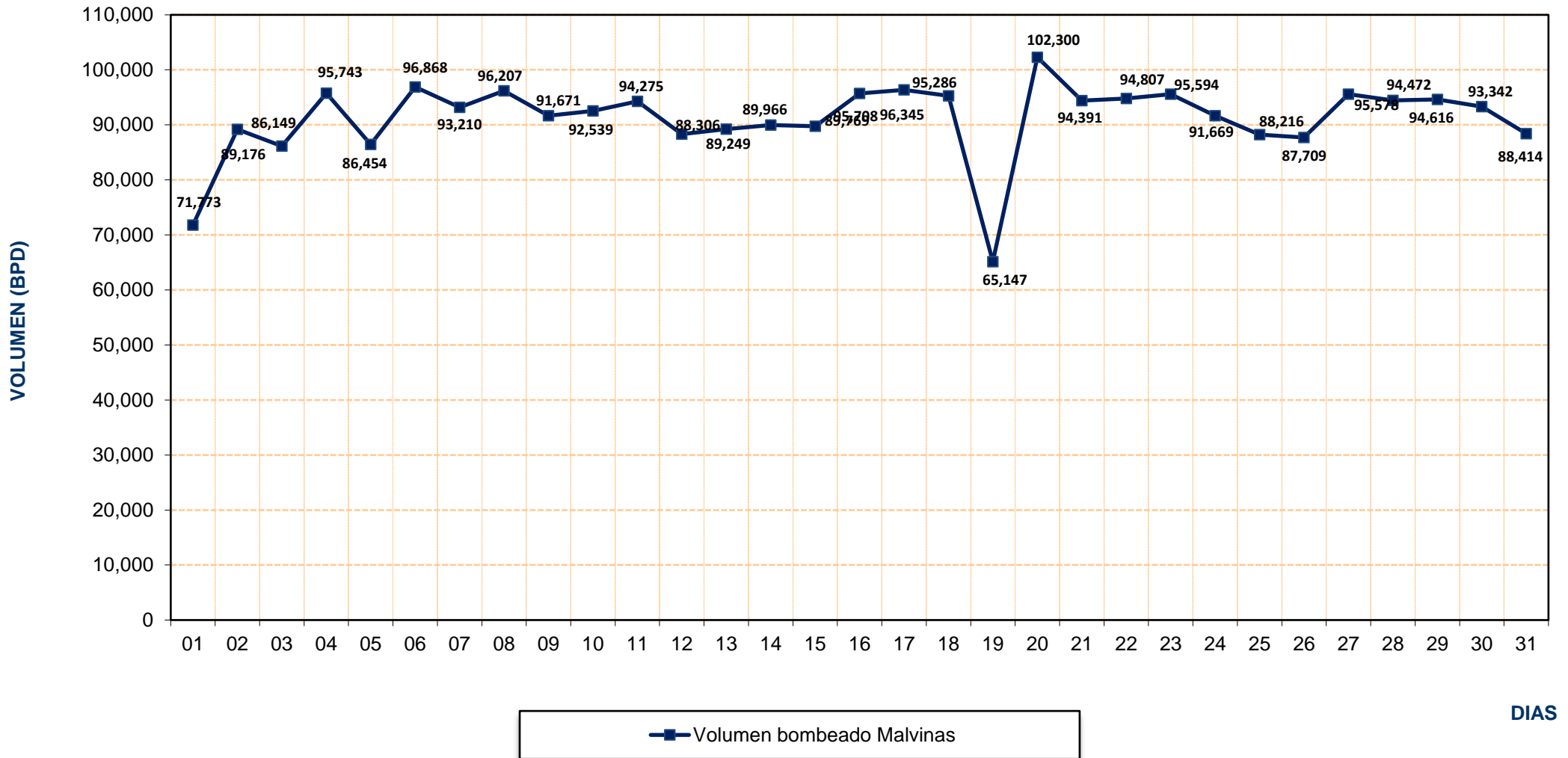
<sup>2</sup> BPD: Barriles Por Día

## REPORTE OPERATIVO\* DEL SISTEMA DE TRANSPORTE DE GAS NATURAL (GN) DURANTE DICIEMBRE 2017



\* Los valores podría diferir del Volumen Fiscalizado.

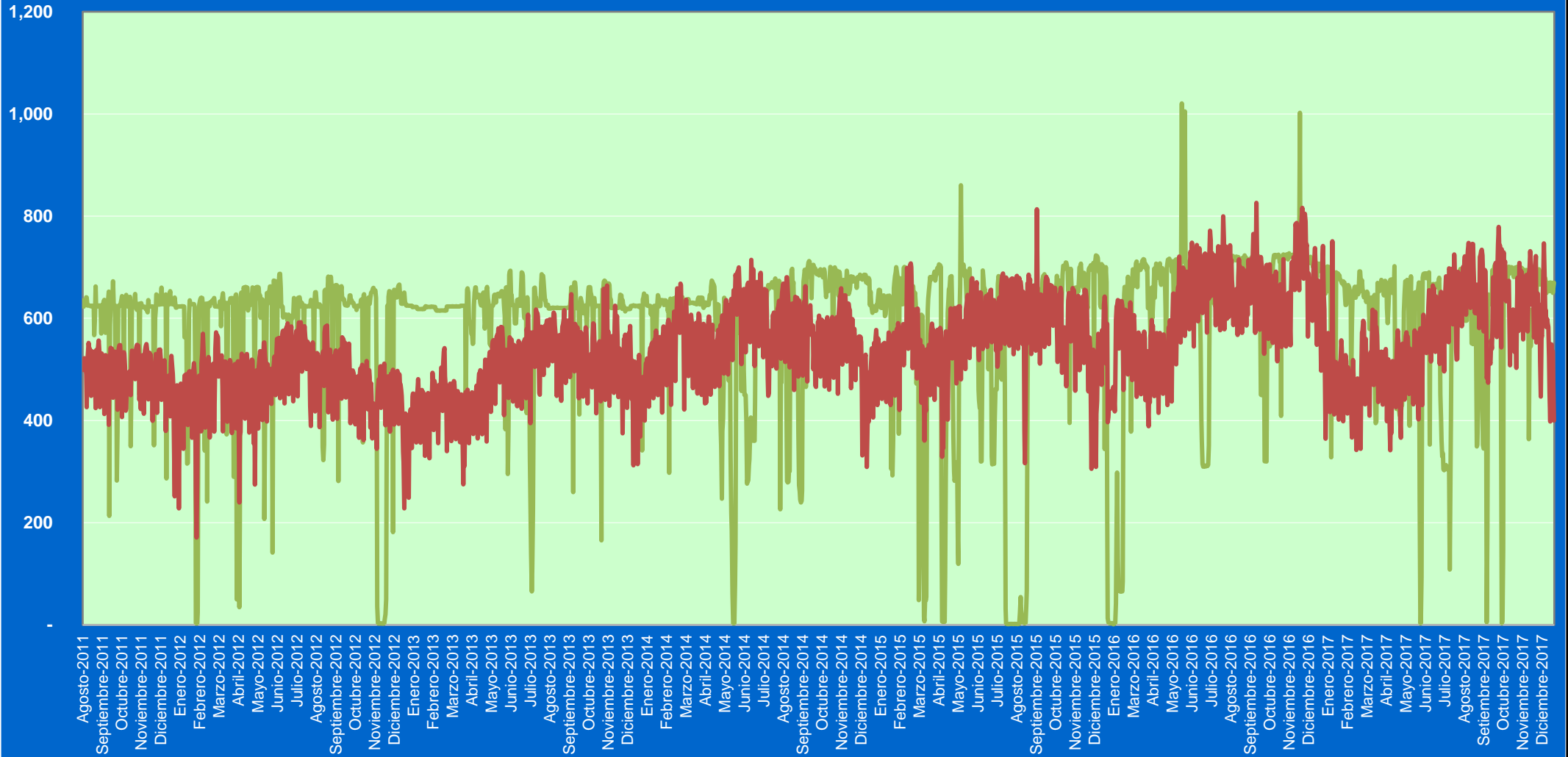
## REPORTE OPERATIVO\* DEL SISTEMA DE TRANSPORTE DE LÍQUIDOS DE GAS NATURAL (LGN) DURANTE DICIEMBRE 2017



\* Los valores podría diferir del Volumen Fiscalizado.

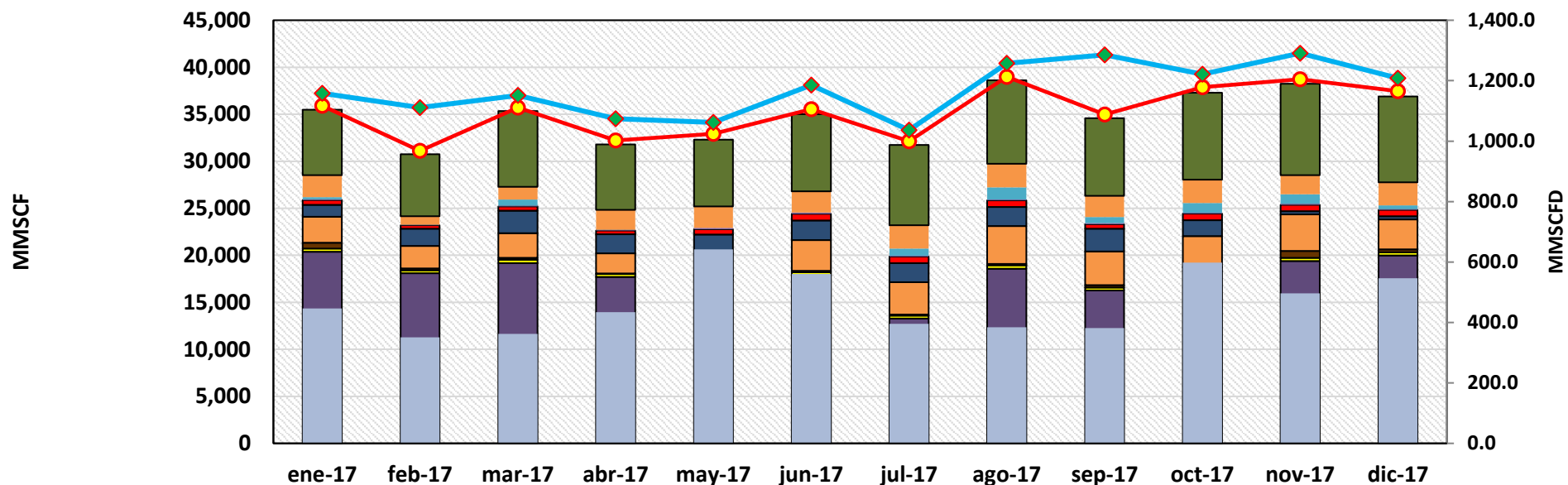
Volumen  
(MMSCFD)

### Volumen de Gas Natural entregado diariamente por TGP en millones de pies cúbicos diarios (MMSCFD) Agosto 2011 - 31 de diciembre 2017



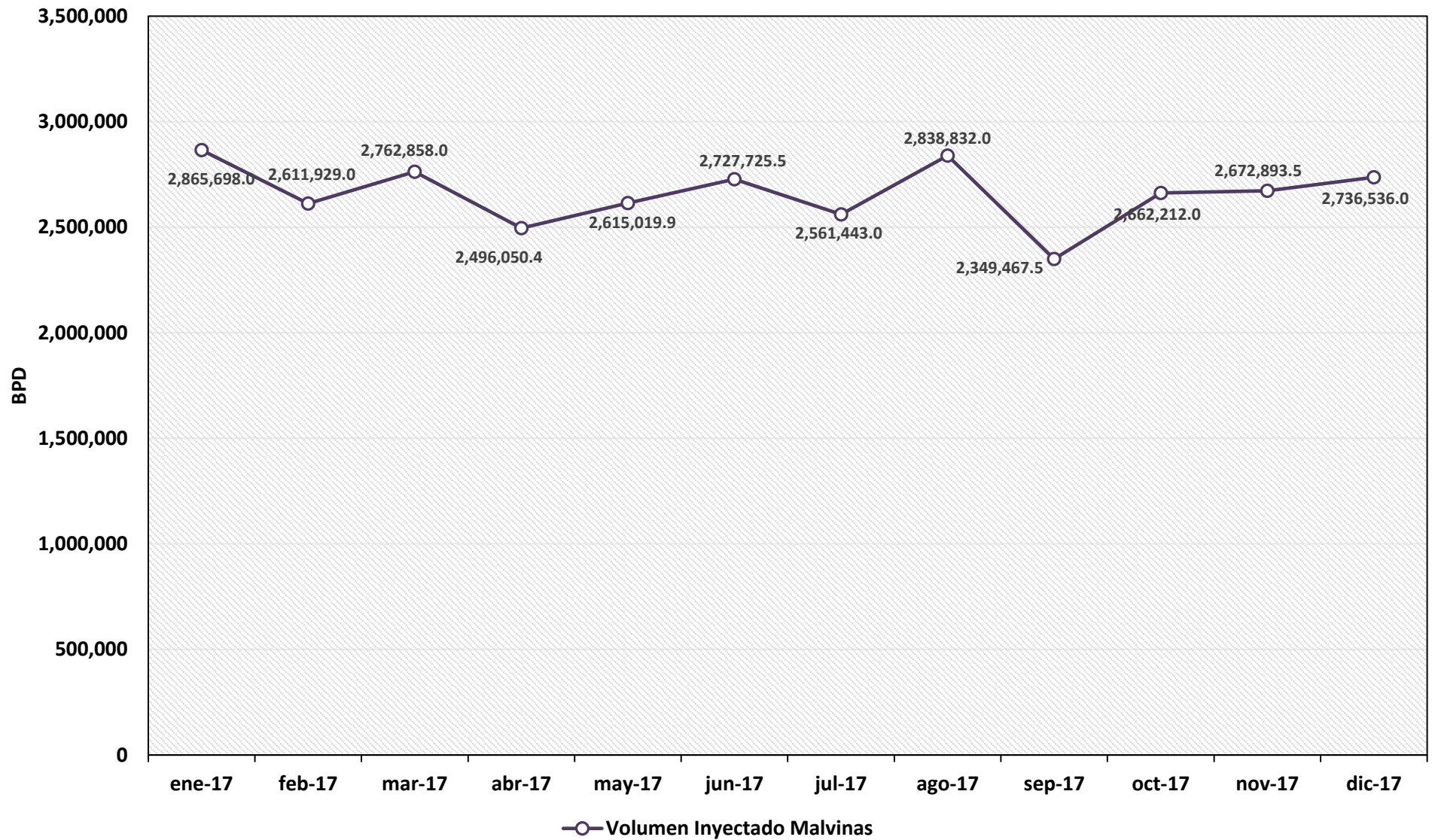
— Planta Melchorita — B.O.O.T

## REPORTE MENSUAL DE VOLUMENES ENTREGADOS EN EL SISTEMA DE TRANSPORTE DE GAS NATURAL (GN) DURANTE EL 2017

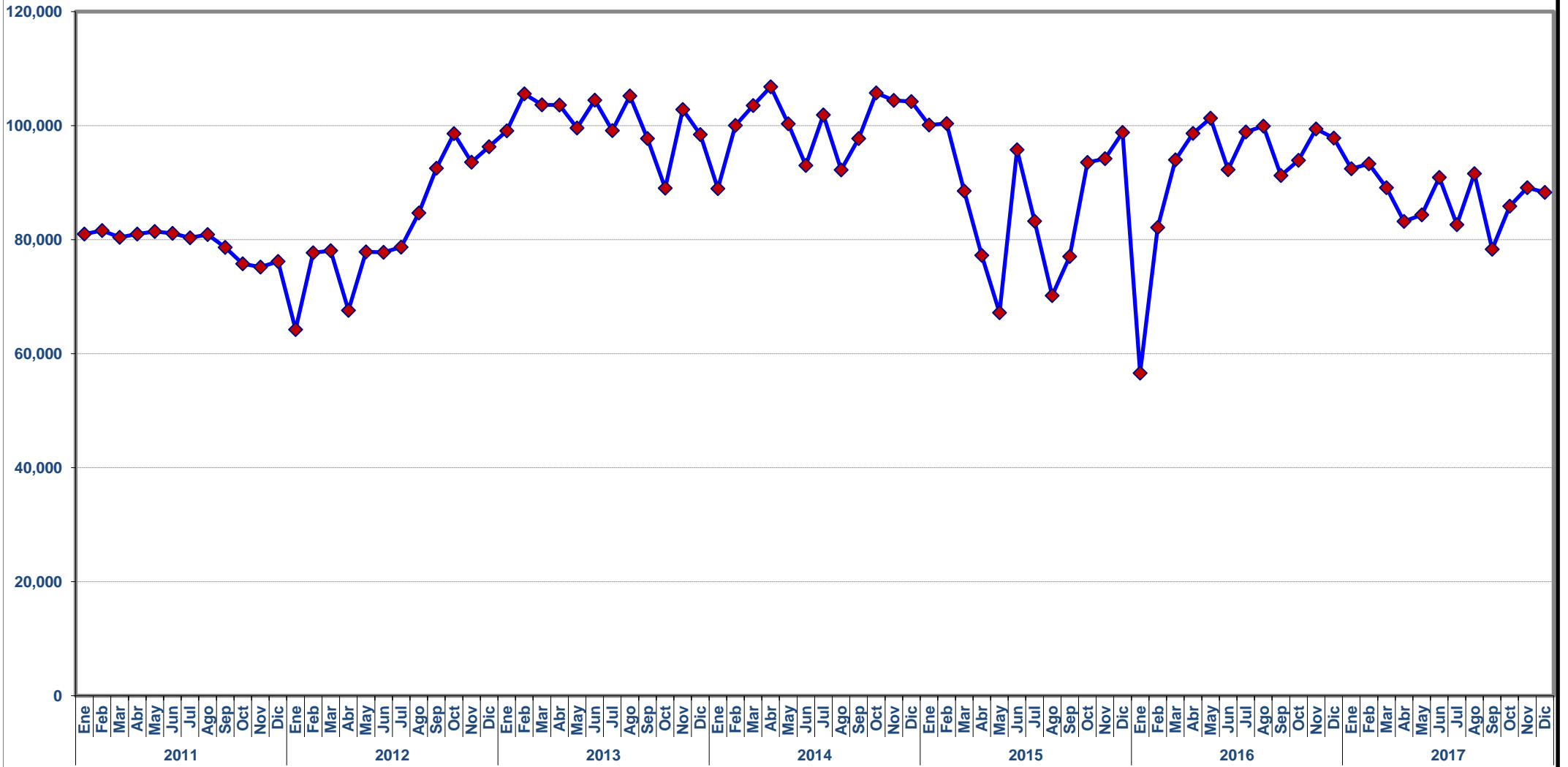


	ene-17	feb-17	mar-17	abr-17	may-17	jun-17	jul-17	ago-17	sep-17	oct-17	nov-17	dic-17
Lurín	6,956.7	6,603.3	8,068.1	6,950.3	7,096.5	8,178.1	8,523.0	8,879.5	8,284.1	9,220.3	9,701.9	9,150.7
Chilca - Fenix Power	2,324.8	897.9	1,351.1	2,128.8	2,264.0	2,274.2	2,479.2	2,493.4	2,237.7	2,487.4	2,030.5	2,446.4
Chilca - Termochilca	236.3	0.1	639.4	0.0	0.0	0.0	759.3	1,295.4	662.4	1,035.5	1,024.7	382.8
Contugas - Chincha	84.1	62.4	76.8	81.8	161.3	139.2	101.4	98.4	102.5	105.4	102.7	90.7
Egesur-Egasa	504.0	364.6	464.9	394.2	548.5	702.2	704.7	706.8	489.7	692.1	683.0	679.5
Kallpa	1,267.2	1,837.5	2,400.1	2,031.7	2,057.6	2,065.9	2,032.1	2,022.1	2,399.0	1,683.2	350.7	331.2
Engie Energia Perú	2,756.1	2,394.2	2,610.9	2,123.0	2,326.5	3,288.0	3,436.2	4,024.1	3,585.4	3,269.8	3,876.4	3,190.3
Duke Energy	615.3	180.2	207.3	50.6	135.5	129.6	100.6	156.2	250.0	105.7	744.1	300.9
Humay	359.4	325.5	350.4	329.5	327.6	341.5	318.2	342.3	307.2	349.7	338.0	351.5
Planta Melchorita	20,368.1	18,090.2	19,170.6	17,694.6	17,369.1	17,872.6	13,275.6	18,587.8	16,277.2	18,328.7	19,379.5	19,979.5
Contugas - Chincha	446.2	350.6	361.9	434.2	642.0	560.2	395.6	383.7	381.5	598.1	496.4	546.4
Total Transportado GN	35,918.3	31,106.6	35,701.4	32,218.7	32,928.6	35,551.6	32,125.9	38,989.7	34,976.8	37,875.9	38,727.9	37,449.9
Promedio Total Transportado (MMSCFD)	1,158.65	1,110.95	1,151.66	1,073.96	1,062.21	1,185.05	1,036.32	1,257.73	1,285.41	1,221.80	1,290.93	1,208.06

## REPORTE MENSUAL DE VOLUMENES ENTREGADOS EN EL SISTEMA DE TRANSPORTE DE LIQUIDOS DE GAS NATURAL (LGN) DURANTE EL 2017



# VOLUMEN PROMEDIO DIARIO DE LÍQUIDOS DE GAS NATURAL TRANSPORTADO POR TGP EN BARRILES POR DÍA (BPD) Enero 2011 - Diciembre 2017



◆ Volumen de Líquidos de Gas Natural